

Taxpayer's Association
Disappointed Over Slim
Reduction In Budget

President Arthur Bloemeke Says Group Plans
Further Meetings To Map Future Strategy;
Does Not Rule Out Possibility Of Candidate

Arthur Bloemeke, president of the Belleville Taxpayers Association, said this week that his group was naturally disappointed with the meager results obtained at the Friday night public hearing on the new town budget. "We were concerned particularly with the indifference encountered and the attempts to belittle our efforts," he emphasized. "Obviously major targets for economy were ignored in the rush to find flaws in the details of our hurried findings," he added.

RED CROSS FUND
RAISES \$3,100
IN MARCH APPEAL

Dr. Frank DiRuggiero
Optimistic About Topping
Quota Of \$25,000 Here
Belleville's 1957 Red Cross Fund Appeal has raised \$3,100 to date, according to campaign chairman Dr. Frank DiRuggiero. The drive started the first of the month and will last officially for the entire month of March. Over a quota for the local campaign has been set at \$25,000 and drive leaders are optimistic about topping the goal.

Dr. DiRuggiero, serving his first year as campaign chairman, pointed out the vital need for meeting this year's quota. He said that in the past year's time, "150 Red Cross volunteers had served an average of 750 hours each month in the hospitals and other service agencies. The Red Cross blood program also collected 550 pints of blood for local residents in that time, he added.

The campaign chairman listed the breakdown of contributions so far as follows: Industrial corporations, \$895; Industrial employees, \$1,220; Commercial, \$1,655; Government, \$175; School gifts, \$80; Out of town \$40; and miscellaneous, \$13.

In pointing out some of the activities of the Red Cross on the local level, Dr. DiRuggiero said that home service volunteers were on the job 24 hours a day aiding the sick, the aged, the blind, the deaf, the dumb, the feeble-minded, the physically handicapped, the mentally ill, the alcoholics, the drug addicts, the delinquents, the victims of natural disasters, the victims of war, the victims of crime, the victims of poverty, the victims of disease, the victims of disaster, the victims of death, the victims of life.

HOME LOOTED OF
JEWELRY, BONDS

Thieves were active in Belleville over the weekend as they broke into the home of Michael S. Kiskiele, 253 Hornblower Avenue, and stole jewelry valued at \$1,500, police reported this week. Jewelry valued at \$1,150 and \$427 in bonds and cash were taken between 10 a. m. Saturday and 9 p. m. Sunday.

The family, who live in New York during the time, Police reported that entry was gained through a business window and that an engagement and wedding ring, valued at \$800, were missing. Also taken were two women's watches, valued at \$150 each. In addition, fourteen \$25 savings bonds, a \$100 savings bond, and three bankbooks were also reported stolen by local police.

Weekend Weather

The weather outlook for the weekend is good. Skies will be sunny and no rain is forecast. It's garden-variety weather.

The Face Is Familiar:

William Chapman Enjoys
Teaching, Athletics, Travel

By Myrna Lamb

William Chapman looks like what he is. An intelligent, reserved man with a bent for athletics. The principal of Greylock School, he is one of the charter members of the Varsity Club, a group whose main work is in recognizing the efforts of high school athletes. He himself played football in college and in his teaching career, has been football coach for Belleville High four times.

"I coached the first team that ever beat Bloomfield," he said with quiet pride, "and I coached the first Belleville team to beat Nutley." Chapman has been assistant basketball coach and assistant football coach several times, and in his own words "I take over Greylock's basketball team in an emergency."

His interest in athletics is not surpassed by his feeling for young people. Perhaps his secret lies in his inability to forget "what it's like to be young." He adds "Being with youth keeps you youthful." His dealings with children and youth do not start with his job as principal of the No. Five School, and go beyond his interest in sports. He has been connected with scouting for the past several years. At present he is chairman of leadership, and on the troop committee for Troop 305 in Belleville.

He is also president of the Belleville Public Library Board of Trustees, and a long time member of the Belleville Teacher's Association. On the latter, he has

Little League Football Champs Feted



Pictured above are members of the Kiwanis sponsored team in the Recreation Department football Little League who won the co-championship of the loop this year. The players were honored at a dinner last week at which Frank Triputka, former Notre Dame backfield star, was guest speaker. In front row, left to right are Craig Lukowiak, Frank Zinna, Richard Luzzi, Joe Latore, Bill Goldrick, and Bob Doeffinger. Second row, Steve Fox, Glen Griffen, Paul Schalline, Steve Pasquale, Larry Latore, and Tom McMahon. Back row, Ken Schiatterella, Ray Harmon, Mike Chieffo, Joe Valvano.

Team members were presented with Kiwanis athletics letters. Larry Latore was also presented a trophy designating him as the outstanding sportsman on the team. The award was voted on by his team mates.

Nominations Closed For
April 16 Primary Election

Little Excitement Anticipated In Race Here As
No Contests Appear; Party Committee And
Women Posts Filled With Incumbents

There will be little excitement and practically no contests next month when Belleville voters go to the polls in an off-year primary election. The election will be April 16 and deadline for filing nominating petitions passed quietly last week.

Democratic and Republican voters will go to the polls to decide their party's ticket for governor, 12 State Assembly posts from the county, a county supervisor, three members of the county Board of Freeholders, and party committees and women.

Locally, town Republican chairman Frank Baigant and town Democratic chairman Ralph Vana submitted their candidates for party committee posts which were identical to those of the previous year's election. There were no contests listed, and it appears that all incumbents will have clear sailing. The complete breakdown of committee and women follows:

Democratic: Ward one, district one—Frank Simone and Dorothy Estelle; district two—John T. Costello and Ellen Barone; district three—James V. Bessel and Eleanor Mannelli.

Ward two, district one—William J. Hogan and Anna A. Boylan; district two—Henry E. Ward and Anna Ward; district three—John R. Caruso and Geraldine Russo; district four—Allen F. Conklin and Anna M. Moore; district five—Martin F. Murphy and Theresa O'Neill; district six—Joseph Connelly and Marion L. Malcolm.

Ward three, district one—John Hanley and Sue Dintozo; district two—Patrick F. Byrnes and Patricia Spillone; district three—Patsy Parigi and Hedda Faust; district four—Joseph L. Masella and Joseph L. Masella; district five—Anthony Marino and Theresa Infalinda; district six—Patrick LaMorte and Rose Del-Tito.

Ward four, district one—Anthony W. Domenick and Rita Culla; district two—Maggie Moro and Anthony Moro; district three—Barton F. Rossi and Mary Rita Rossi; district four—John B. Connelly and Margaret Connelly.

Republican: Ward one, district one—George Rawcliffe and Marie Kimble; district two—Harold E. Brand and Jeanne M. Verian; district three—Louis M.

(Continued On Page Two)

Old Time Belleville's Police Force



Back in 1907 when Belleville's Police Department was first organized, this is what the "cop on the corner" looked like. The four men shown above comprised Belleville's first force until a year or so later when the department gradually expanded. Left to right, they are Michael J. Flynn, Charles Pearl, William Swinn, and Joseph Hannon. The four are shown standing outside original fire headquarters on Rutgers Street by the railroad tracks.

HIGH SCHOOL SETS
CONFERENCES

The faculty and administration of Belleville High School are now scheduling parent-teacher conferences to be held on the following days: Thursday, March 21, from 1:30-4:00 p. m.; Tuesday, March 26, from 1:30-4:00 p. m.; and Thursday, March 28, from 7:00-9:00 p. m.

Appointment schedules are being sent home with the students asking parents to come to the school for half-hour conferences on the above mentioned days. During the afternoon conferences, school will be dismissed for all students at 4:00 p. m.

If the parents are unable to visit the high school on that date and they feel they would like to speak with the teachers, they may phone the high school to arrange a conference time.

Commissioners Trim \$8,315
From 1957 Appropriations

Action Comes At Lengthy
Public Hearing On Budget
After Plea For \$150,000 Cut

After a four hour public hearing last Friday night on the 1957 Municipal Budget, Belleville Town Commissioners announced they were cutting \$8,315 from the figure they had originally submitted for approval. At many points in the lengthy session, heated arguments flared between members of the Belleville Taxpayers Association, who led the attack on the proposed budget, and Commissioners, who were defending their appropriations.

OUTLINES ARMY
REGULATIONS ON
GUARD ENLISTMENT

Lt. A. J. Biviano, Of Local
National Guard Unit Explains
Meaning Of Six Month Term

As a result of the reduction of the 1957 budget, final approval of the figures was delayed for about two weeks. Mayor Laurence J. Padula explained that the reduced budget would have been submitted to the state director of local government for approval before Commissioners could give their final okay to the expenditures. He said the budget might be passed at the next Commission meeting on March 26, if not sooner at a special meeting.

Three Departments
The present, which the commissioners made in their spending represents about two tax points and would result in a tax rate of 6.65 for the coming year.

The cuts were made in three of the five town departments. Mayor Laurence J. Padula led the way by cutting \$10,000 from his public safety budget. Mayor Padula revealed at the meeting that he would cut \$4,050 from his regular and finance budget, and Commissioner Elmer S. Hyde stated at the meeting that he would find only \$200 to cut from his parks and public property budget.

Commissioner Elmer S. Hyde said that he would also go along with the budget reduction. He prepared to be the predecessor, the late Joseph King. However, King died stating that if any emergency budget was passed, all surpluses would be turned over and used towards reducing next year's budget.

More Than 300 Attend
The amended budget as it now stands calls for a total general appropriation for all municipal purposes of \$2,295,081. Of that total, \$1,135,000 is to be raised by local taxation.

The more than 300 townswomen who attended the public hearing, heard Arthur Bloemeke, president of the Belleville Taxpayers Association, and committee members at a whole offering by \$100,000 could be slashed from the town budget with a resultant drop of 30 points in the tax rate.

Each of the five committee heads made a statement in support of the budget. (Continued From Page One)

THIRD CANDIDATE
FOR COMMISSION

Mrs. Ann Guglielmi, of 75 Lake Street, this week became the third candidate for Belleville town commission in the May, 1958, election. Mrs. Guglielmi, in a statement to the Times-News, said she has decided to run in an effort to fight the high taxes brought about by the present administration.

The two previous candidates to announce their intentions for the election because he is open to the county and they have decided to run in an effort to fight the high taxes brought about by the present administration.

Mrs. Guglielmi's husband was a contender in the 1946 election and has been approached this year, she said. However, he decided not to run because he is open to the county and they have decided to run in an effort to fight the high taxes brought about by the present administration.

Mrs. Guglielmi said she is presently employed by the Jergens Corporation.

Girl Scout Cookies Mean
Girl Scout Cabin Here

Once upon a time, there was a cabin. It wasn't a big cabin, just a large room with a fireplace, with no running water, and no kitchen or bathroom facilities.

"Camp Kinsley" was the name of the cabin, and it was built with money raised by a cookie drive, and was managed by each girl scout troop (for it was a girl scout cabin) making a donation such as dishes, pans or towels.

The Belleville Girl Scout Mother's Club (they it was a Belleville Girl Scout cabin) had been largely instrumental in raising the money for the original building, and now the fathers of the girls, assisted with roof and shingles.

A kitchen was added, a stove at last, a bathroom, and a shower, and folding beds and mattresses.

June 7, 1948, is in a way, the end of this story. Two young boys set fire to the Belleville Girl Scout cabin. "Camp Kinsley" was destroyed, and was no more.

In 1952 the Irvington scouts built on "Kinsley" and even though that was gone, this could be the end of the story. But it was the beginning of a new and better story. As of 1956, the scouts were given a new site in the South Mountain area, and the beginning is up in Belleville.

INVESTMENT CLUB ANNUAL MEETING

The Family Investment Club held its annual meeting recently. The club has been in existence for more than a year. It is composed of friends merely for the purpose of educating people in the better conduct of family finances, and preparing its members to utilize their resources as wisely as possible in order to supplement their earnings in productive ways and to pensions when retirement comes.

This particular type of investment club is the only one of its kind in Belleville. It has experienced excellent investment opportunities through mutual study of companies and management.

The Family Investment Club held its annual meeting recently. The club has been in existence for more than a year. It is composed of friends merely for the purpose of educating people in the better conduct of family finances, and preparing its members to utilize their resources as wisely as possible in order to supplement their earnings in productive ways and to pensions when retirement comes.

2 MILLION AUTO OWNERS

It's a fact that more than 2,000,000 drivers enjoy Nationwide's worry-free driving security. Why? Because policy is non-assessable, with budget-wide renewal plan, plus auto theft coverage. And, it's backed by one of America's "different" insurance companies—Nationwide Insurance. Phone or drop us a line—get the facts free.

A. W. DANKWERTH
483 Franklin Avenue
Nutley
NU. 2-3335
Res. PL. 9-0036

NATIONWIDE
MUTUAL INSURANCE COMPANY
1000 WARD AVENUE, CINCINNATI, OHIO

OUR CLASSIFIED ADS BRING QUICK RESULTS

FOR THE things you want most...

SALE

FIDELITY

16 "One-Stop" Banking Offices... Save time at the one near you!

FIDELITY UNION TRUST COMPANY

The Bank in New Jersey

Member Federal Deposit Insurance Corporation

OPEN A SAVINGS ACCOUNT NOW! 2 1/2% INTEREST

16 "One-Stop" Banking Offices... Save time at the one near you!

FIDELITY UNION TRUST COMPANY

The Bank in New Jersey

Member Federal Deposit Insurance Corporation

OPEN A SAVINGS ACCOUNT NOW! 2 1/2% INTEREST

16 "One-Stop" Banking Offices... Save time at the one near you!

FIDELITY UNION TRUST COMPANY

The Bank in New Jersey

Member Federal Deposit Insurance Corporation

OPEN A SAVINGS ACCOUNT NOW! 2 1/2% INTEREST

The Family Investment Club extends to any one concerned or interested in such activities. The Club consists of leading local professional and business men. Officers are: Nicholas Di Giovanni, president; Frank Morone, vice-president; Emil Haer, Louis Taitz, treasurer; and Richard Masi, secretary. Michael Trotta, publicity agent; James Morone, Louis Rizzo, Al Zigras, Frank Masi, John Masi, Angelo Sarara, Samuel Granata, Paul Hecckman, Anthony Moro, trustees.

Easter

(Continued From Page One)
April 21, Easter Sunday, Hugel said. Hugel's signature will be on all letters accompanying the Easter Seal which are sent to Essex County people. Return address for contributions will be the Federal Trust Company, Newark, of which Hugel is vice president.

The new Easter Seal sheet, which does not contain the traditional 100 postage stamp-size adds emphasis to the fact that the Easter Seal Society does not "sell" Easter Seals.

Easter Seals are symbols of the rehabilitation of physically handicapped people, and when everyone can help them obtain by contributing to the Easter Seal Society according to the dictates of his own heart, the chairman, "We don't send out Easter Seals as stamps for sale as so much cash but rather as an invitation to join through a contribution large or small, in helping to provide the specialized professional rehabilitation help for handicapped people of which Easter Seals are the nationwide symbols."

Budget

(Continued From Page One)
ations, which had been printed in the Times-News last week, to the respective commissioners. Bloomekiss stressed that the group was there only to work for better government, that they had

our classified ads bring quick results

FOR THE things you want most...

SALE

FIDELITY

16 "One-Stop" Banking Offices... Save time at the one near you!

FIDELITY UNION TRUST COMPANY

The Bank in New Jersey

Member Federal Deposit Insurance Corporation

OPEN A SAVINGS ACCOUNT NOW! 2 1/2% INTEREST

16 "One-Stop" Banking Offices... Save time at the one near you!

FIDELITY UNION TRUST COMPANY

The Bank in New Jersey

Member Federal Deposit Insurance Corporation

OPEN A SAVINGS ACCOUNT NOW! 2 1/2% INTEREST

16 "One-Stop" Banking Offices... Save time at the one near you!

FIDELITY UNION TRUST COMPANY

The Bank in New Jersey

Member Federal Deposit Insurance Corporation

OPEN A SAVINGS ACCOUNT NOW! 2 1/2% INTEREST

16 "One-Stop" Banking Offices... Save time at the one near you!

no political candidates in mind. He said that if anyone were being elected, it would be the committee was formed to do something about it. "We are not here to elect anybody," he said. "We are trying to be wholly objective."

"Hitting Low" Commissioner Sullivan and Mayor Padula announced their intention to run along all seven wards during the year.

Commissioner Hyde then defended his budget by calling attacks on the recreation department unfounded. "We're hitting pretty low when we aim our attacks on the children," he said. "This was in reference to a curbing of several recreation department activities."

Director of Recreation Robert E. Cook pointed out that Belleville per capita average expenditure for recreation is \$1.33, far below the average of \$2.11.

Concentrating on the public works department, Salvatore Calabro said the committee was not present to quibble but to make expenditures since they were the only ones capable of doing so. "We have a very negative reaction," he said, "and only because we could give it five spare hours, not our full time devotion."

Mayor Padula, who had called in stating that cinder block could be purchased for \$1.25 a cubic yard, whereas the town now paid \$2.50. He stated, however, that according to his findings it should be possible to buy this and other supplies at cheaper prices.

Commissioner Smith vehemently denied these statements and challenged Calabro or Bloomekiss to buy cinder or other supplies at a price lower than what was currently being paid.

Bloomekiss summarized the committee findings by saying that the whole question was a problem of attitude. "We've made mistakes," he said, "but we can't do so much more." These recommendations should be used as a basis for further exploration in the budget reduction problem, he said. "The commissioners should take the necessary time to revitalize the situation and bring some reductions to us," he stated.

Town critic James R. Golden answered the commissioners' defense of their spending by saying, "I've heard an eloquent defense of nothing." Promises are made before election, he said, and these are abused afterwards. He termed the commissioners' great defense of the budget reduction "playmate" and said there was too much waste in the budget. He also attacked the practice of building up expenses in the budget in off election years, and then using these to reduce the tax rate in an election year.

Smith retorted that Golden had only one thing in mind "and that was to get elected."

Guard

(Continued From Page One)
must enter Active Duty for Training prior to becoming age 18 1/2, except that high school students may delay training while in school. All enlistees must enter training in sufficient time to complete the total sixteen weeks period by January 1, 1958. This option is available to only new, initial enlistees enlisting after March 1, 1957.

Effective April 1, 1957, Enlist for three years, elect six months of Active Duty for Training instead of eleven weeks. Persons choosing this option must enter training within 120 days of enlistment. Entry into training of high school student enlistees may be delayed for a period not to exceed one year from date of enlistment for the purpose of and until completing school.

Effective October 1, 1957, All non-prior service personnel will be required to enter upon six months active duty for training as described above as a condition of enlistment.

Effective April 1, 1957, enlistment for a three year term of non-prior service applicants in the age group 18 1/2 - 25 will be under the following conditions:

Enlistee will perform six months active duty for training and enter

Honored By School Seven PTA

On Wednesday morning, April 10, the School Seven PTA, which was held at the high school, and at School No. Nine and One. The last shots in the series will be available on Wednesday, April 10 to preschool children at the Town Hall again. The hours will be 10 a.m. to 12 noon and from 2 to 4 p.m.

Harry again stressed that "this month all children up to and including 19 years of age should be immunized. He said that up to now fewer than one-third of the injections of vaccine necessary to eliminate polio have been given."

Working with Dr. DiGuglielmo as assistant chairman are Robert Jackson, industrial; Mrs. Lida Baker, commercial; George Maher, organizer; Charles Pedersen and Robert R. Williams, special gifts; Mrs. Harriet Topping, coin collector; George Admonia, Miss Lois Van Dyke, and Mrs. George Admonia, speakers' bureau; John Burgess, fund bookkeeper; and Mrs. Irma Ryer, displays.

Mrs. Edward Rochan (left) is shown being presented with a life time membership on behalf of the PTA members of School No. Seven for her outstanding contributions and long service. The award, the highest honor bestowed by the State Congress of Parents of Teachers, is being presented by Mrs. Sidney Bygren, president of the School Seven PTA. The official notification of membership in the State Congress of Parents and Teachers states that it is being presented "in appreciation for valuable service that you have given to children and youth. The greatest gift is not a gem or a jewel. The greatest gift is service. May your membership in this group serve to remind you of your gift of service to children, that their lives may be fuller in all their surroundings."

Warren M. Johnson and Rhonda F. Strang; district two—Patrick G. Tomasko and Catherine E. Norton; district three—Daniel H. Hyde and Rose C. Fredericks; district four—Alfred G. Moore and Jessie P. Rae; district five—Russell C. Eller and Ruth L. Reynolds; district six—Clarence D. Van Sickle and Roberta Hart.

Ward Four, district one—Benjamin Maglia and Marie C. Maglia; district two—Angelo L. Rossi and Ruth Fredericks; district three—Caesar Gasario and Vincenza Carboni; district four—Edward Jermert and Theresa R. Singer; district five—Harry E. Nees and Mildred E. Ross; district six—Rudolph J. Zoeller and Hazel E. Elliott.

Individuals enlisted under this program shall be required to enter upon six months active duty for training within 120 days of enlistment and to serve the remainder of their enlistment in the Active National Guard.

As an exception, those in a Selective Service deferred status possessing a needed technical skill. They will not be required to enter six months training but may volunteer for it.

On Wednesday, March 20, first, second, and third shots will be given to the preschool children at the health office in Town Hall. Injections will be given from 10 a.m. to 12 noon and from 2 to 4 p.m.

On Wednesday morning, March 27, only second and third shots will be given to the youngest at St. Anthony's School No. Four, School No. Two, and School No. Ten. In the afternoon, second and third shots will be given to children at Schools No. Seven and Eight.

On Thursday morning, March 28, the shots will be given at St. Peter's School for second and third shots only.

Nominations

(Continued From Page One)
Anderson and Lillian Winfield. Ward two, district one—James Hart Campbell and Helen Lokowski; district two—Thomas J. Doyle and Virginia G. Mermert; district three—Frank Bengert, Jr., and Mary Grace E. Hansen; district four—Robert E. Poppel.

FOR THE BEST IN GAS HEAT

Call NU. 2-0641

No Interruption In Heating

GAS CONVERSIONS
GAS BOILERS
GAS HEATING SYSTEMS

HOME GAS HEATING CO.
433 Kingsland Road, Nutley

Red Cross

(Continued From Page One)
Working with Dr. DiGuglielmo as assistant chairman are Robert Jackson, industrial; Mrs. Lida Baker, commercial; George Maher, organizer; Charles Pedersen and Robert R. Williams, special gifts; Mrs. Harriet Topping, coin collector; George Admonia, Miss Lois Van Dyke, and Mrs. George Admonia, speakers' bureau; John Burgess, fund bookkeeper; and Mrs. Irma Ryer, displays.

Police

(Continued From Page One)
Chief Rummel said that Pontrella had nothing in his possession when found except seven cents and a book of matches, from the Central Club in Newark. A bartender from the club has been unable to identify Pontrella at the hospital or remember whether he had been in the tavern, Rummel said.

Pontrella was last seen at home Friday afternoon, according to his brother, Patrick Pontrella. He had been out of work, police said, and was accustomed to staying away from home for three or four days at a time, they added.

No clues have been uncovered in an intensive area search by police of the three communities. Police say their main hope is that Pontrella will regain consciousness and be able to give them some clues concerning his attackers.

Nutley Chief Rummel theorizes that the victim left home Friday afternoon to go to a movie in North Newark, not far from home. Rummel believes that Pontrella was probably mugged somewhere between that time and when

he was found badly injured in the Irvington terminal shortly after 10 a.m. Saturday.

Rummel said Pontrella apparently boarded a bus which left for Nutley terminal about 9:15 a.m. Just where he got on the bus, however, is unknown. Police said there was no identification on his person when he was discovered. Sand in the victim's shoes had not been traced yet, but Pontrella wore glasses, but had none with him when discovered.

Pontrella's family told Nutley detectives over the weekend that he enjoyed going to Rutgers University in Newark to watch the buses coming and going. Police said they were not sure that last Friday or early Saturday when he was attacked.

Face

(Continued From Page One)
been chairman of the salary committee, and twice president of the organization.

As for teaching predictions, Chapman feels, "It's a delight to help the young with their problems, whether they like it or not." He added: "Sometimes teaching may seem like an enervating, thankless job, but in 10 or 15 years, they will begin to understand and appreciate what you have done for them, and keeping that in mind makes it easier."

As a principal, some of his efforts to smooth the way toward innovation of inevitable problems involved scheduled conferences with parents, two afternoons and one evening a week, with extra appointments that occur throughout the school day. Chapman feels that the school principal what a "consulting specialist is to a doctor," and makes use of the system accordingly.

On his recent participation in Essex County's Principals' Association Conference on the "Gifted Child," he remarked "In spite of the weather, 90 percent of the 400 people who had to go out to lunch, returned for the second half of the conference. So it must have been good." He himself feels in relation to the gifted child problem (not a new problem by any means according to Chapman) that I.Q. should not be the only criterion in determining a child's gifts, and that homogeneous grouping will not solve the problems of individual differences within a class.

Again a personal opinion, Chapman feels that he would consider placing a child's entrance into kindergarten until the age of six, because, for the most part, children are not ready physically and emotionally for reading until the age of seven. In the event of a child who has not matured enough as yet to compete on a level with

the rest of the class, he considers the principle of retardation a beneficial one.

Biographically speaking, Chapman was born in Belleville, graduated from Belleville High School, and has devoted at least 25 of his teaching years to Belleville. He became principal in 1950 of Geylock School.

His wife, the former Mildred Grace Miller, of Allentown, Pa. ("I dragged her away from it," is active in Belleville's Women's Club. His son, William A. Chapman, is a student at Rutgers University, and can claim his father as president of the Parents' Club of Lambda Chi Alpha of Rutgers.

Raymond W. Chapman, a student at School No. Three, prefers his new situation since "none of the kids can say you think you're pretty good, because you're old man's principal."

The family hobby is travel. "We've been in 36 states, and hope to make them all before we quit traveling for good."

The personal hobby, a pet one, is doing his own upholstery, as well as assorted do-it-yourself home repairs.

Chapman is a graduate, Bachelor of Arts, from Muhlenberg College, and a Master of Arts graduate of Montclair State Teachers. He was a member of Omicron Delta Kappa National Honorary Society, recognizing leadership and scholarship on an undergraduate level.

Despite this, there was an almost detour between Muhlenberg and Montclair, to a construction job, with an engineering profession in the plans. Fortunately for Belleville and Geylock School, William Chapman turned to teaching.

So They Say

HE CHUCKED A BIG BLUFF

... but he told the truth when he spoke about the satisfaction always given at The Franklin Casino. That's no exaggeration.

So They Say

AT THE FRANKLIN CASINO

398 Franklin Avenue
Belleville
PL. 9-2111

Open Mondays & Fridays to 9 P.M. — Sundays to 1 P.M.
Other days to 7 P.M.

White Oaks Hardware

PAINTS • HOUSEWARES • HARDWARE • TOYS
78 Union Ave. NU. 2-4987 Nutley, N. J.

SALE

FOR THE BEST IN GAS HEAT

Call NU. 2-0641

No Interruption In Heating

GAS CONVERSIONS
GAS BOILERS
GAS HEATING SYSTEMS

HOME GAS HEATING CO.
433 Kingsland Road, Nutley

SALE

FOR THE BEST IN GAS HEAT

Call NU. 2-0641

No Interruption In Heating

GAS CONVERSIONS
GAS BOILERS
GAS HEATING SYSTEMS


HOME GAS HEATING CO.
433 Kingsland Road, Nutley

SALE

FOR THE BEST IN GAS HEAT

17 MODELS FROM \$2349*

DELIVERED LOCALLY



Whatever your need, whatever your budget we've got the Mercury model and price for you! Come in today!

'57 MERCURY with DREAM-CAR DESIGN

ALTO MOTORS, INC. Belvidere, New Jersey

25 Washington Avenue

*No hidden charges. The low price on this factory-delivered Mercury 6-passenger Sedan includes delivery, transportation and handling charges and federal excise taxes. Optional equipment, state and local taxes, if any, extra. Prices may vary slightly in adjoining communities.

The day you take off your hat to your new boss

What a sense of pride and promise when you "open shop" in a business of your own! But don't just dream of that future... start a program of planned savings at your Insured Savings and Loan Association. You can be sure of sound and progressive management. Your dollars bring you excellent returns. What's more, your money's insured up to \$10,000 by the Federal Savings and Loan Insurance Corporation. And it's not subject to the up-and-down of the "bulls and bears." The nation's Insured Savings and Loan Associations have 18 million accounts—6,000 new ones every day—and assets total over \$39 billion.

Where you save does make a difference

De Witt Savings and Loan Association
463 Washington Avenue, Cor. Tappan Avenue, Belleville, N. J.
PL 9-5264

MEMBER SAVINGS AND LOAN FOUNDATION

©The Savings & Loan Foundation, Inc.

Dorothy L. Sholty Is Bride Of Bernard E. O'Connor



Mrs. Bernard E. O'Connor

Miss Dorothy Louise Sholty, daughter of Mr. and Mrs. Arthur Sholty, of 45 Crescent Terrace, was married Saturday afternoon to Mr. Bernard Edward O'Connor, son of Mr. and Mrs. Edward O'Connor, of 203 Franklin Avenue.

The ceremony was performed by Rev. T. Painter Han at Bethany Evangelical Lutheran Church. The bride was given in marriage by her father.

A full-length gown of Italian silk, with scalloped neck of lace and pearls on the bodice, was the bride's mode.

She also wore a crown of pearls and sequins to hold the finger-length veil and carried a bouquet of white roses and baby's breath.

The groom, Mr. Bernard E. O'Connor, of Bloomfield, had her bridesmaids, Miss Ruth Shannon of Belleville, and Miss Julie Murphy of Verona, were ballerina-length gowns of champagne color, and catenoses.

Leonard M. Lufante Jr., of Belleville, was best man for the groom. William J. Domenico Jr., of Belleville, and William Lann

OUR CLASSIFIED ADS BRING QUICK RESULTS

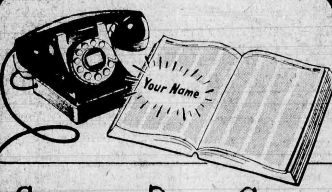
MARCH SALE ON ALL LP AND 45 EP RECORDS

Columbia, RCA, Capital, Decca, and others

GENERAL RECORD SHOP

142 Washington Ave.

PL 9-5663



Going to Press Soon...

YOUR NEW TELEPHONE DIRECTORY

If you want any change in your present listing in the Telephone Directory...

If you want an extra listing—either for someone else in your home or business, or for yourself in a nearby Directory...

Please Get In Touch With Your Telephone Business Office As Soon As Possible

P.S. To Businessmen

The Classified Directory (Yellow Pages) also closes soon. Make sure your advertisement is in this "Where-to-buy" section.

NEW JERSEY BELL TELEPHONE COMPANY

Campus Corner

Miss Elise Bergersen, of 189 Garden Avenue, is on the dean's list released this week at Caldwell College for Women. Elise, daughter of Mr. and Mrs. Arne Bergersen, is a junior at the college.

A graduate of Belleville High School, Miss Bergersen is majoring in social studies and minor in elementary education at the college. She plans a teaching career. She is active in the Greenlee Artistic Guild, Caldwell College Choir, International Relations Club, and Mission Club at the college.

Marilyn F. Woods, daughter of Mr. and Mrs. Kenneth F. Woods, of 71 High Street, sang with the soprano section of the Caldwell College campus choir. The fifty-seven voice choral group is conducted by Dr. Gladys M. Grindeland. Friday, they will leave Upsala for an eleven day concert tour in the New England states.

Edward Corino, of 32 King Street, is on the 1956 Nucleus Staff at Newark College of Engineering, according to Dr. Herman A. Estrin, faculty adviser.

Corino is a member of the Fraternities Committee of the college. The book that is completely operated and financed by the students of NCE. The Nucleus is a compilation of the history of the class and a survey of the extracurricular activities of the college.

Kenneth D. Taggart, son of Mr. and Mrs. John Taggart, of 110 Helmsford Street, has been awarded an award certificate by the Publications Board at Rutgers Newark College for his activities at Newark College of Engineering. He is a member of the weekly student newspaper at the State University.

Taggart is a senior accounting major at Rutgers School of Business Administration.

Richard E. Arvidson, of 178 Floyd Street, has recently been elected to the Phi Delta Theta Social Fraternity at the University of Virginia, where he is studying in a mechanical engineering. Richard is the son of Mr. and Mrs. Ernest Arvidson.

John E. Carpenter, Jr., son of Mr. and Mrs. Carpenter, of 95 Hill Street, is one of two-one Fairfield Dickinson University students of American literature and American history. He was one of the many in the New England where literature and history were made. Their report and guide is Margaret Calk, Pulitzer Prize winning biographer, and a member of the Fairfield Dickinson faculty.

Among the 111 Rutgers Newark undergraduates who completed outstanding academic records and made the dean's list, there were four Belleville students. They are Ted G. Baxter, son of Mr. and Mrs. Arthur Baxter, of 16

St. James, son of Mr. and Mrs. John J. Corbett, of 47 Adelaide Street. Robert M. Nicholas, of 452 Cortlandt Street, and Eugene D. Serpentiello, son of Mr. and Mrs. Daniel Serpentiello, of 23 M. Pleasant Avenue.

Raymond Robertello, son of Mr. and Mrs. J. Robertello, of 51 Crescent Terrace, and Joyce Miller, daughter of Mr. and Mrs. Charles J. Miller, of 832 Franklin Avenue, have earned places on the honors and deans' lists.

Raymond Robertello, son of Mr. and Mrs. J. Robertello, of 51 Crescent Terrace, and Joyce Miller, daughter of Mr. and Mrs. Charles J. Miller, of 832 Franklin Avenue, have earned places on the honors and deans' lists.

Raymond Robertello, son of Mr. and Mrs. J. Robertello, of 51 Crescent Terrace, and Joyce Miller, daughter of Mr. and Mrs. Charles J. Miller, of 832 Franklin Avenue, have earned places on the honors and deans' lists.

Raymond Robertello, son of Mr. and Mrs. J. Robertello, of 51 Crescent Terrace, and Joyce Miller, daughter of Mr. and Mrs. Charles J. Miller, of 832 Franklin Avenue, have earned places on the honors and deans' lists.

Raymond Robertello, son of Mr. and Mrs. J. Robertello, of 51 Crescent Terrace, and Joyce Miller, daughter of Mr. and Mrs. Charles J. Miller, of 832 Franklin Avenue, have earned places on the honors and deans' lists.

Raymond Robertello, son of Mr. and Mrs. J. Robertello, of 51 Crescent Terrace, and Joyce Miller, daughter of Mr. and Mrs. Charles J. Miller, of 832 Franklin Avenue, have earned places on the honors and deans' lists.

Raymond Robertello, son of Mr. and Mrs. J. Robertello, of 51 Crescent Terrace, and Joyce Miller, daughter of Mr. and Mrs. Charles J. Miller, of 832 Franklin Avenue, have earned places on the honors and deans' lists.

Raymond Robertello, son of Mr. and Mrs. J. Robertello, of 51 Crescent Terrace, and Joyce Miller, daughter of Mr. and Mrs. Charles J. Miller, of 832 Franklin Avenue, have earned places on the honors and deans' lists.

Raymond Robertello, son of Mr. and Mrs. J. Robertello, of 51 Crescent Terrace, and Joyce Miller, daughter of Mr. and Mrs. Charles J. Miller, of 832 Franklin Avenue, have earned places on the honors and deans' lists.

Raymond Robertello, son of Mr. and Mrs. J. Robertello, of 51 Crescent Terrace, and Joyce Miller, daughter of Mr. and Mrs. Charles J. Miller, of 832 Franklin Avenue, have earned places on the honors and deans' lists.

Raymond Robertello, son of Mr. and Mrs. J. Robertello, of 51 Crescent Terrace, and Joyce Miller, daughter of Mr. and Mrs. Charles J. Miller, of 832 Franklin Avenue, have earned places on the honors and deans' lists.

UNICO Receives National Charter



Shown above are new officers of the Belleville chapter of UNICO. Pictured from left to right are: standing, Vincent Pipitone, Member of Board of Directors; Peter Coccia, on Board of Directors; Thomas P. Greco, Board of Directors; Frank De Marco, Secretary; Eugene Boffa, National Vice President; Mayor Isadore Padula, President; Michael Scudato, Vice-President; Thomas Maghione, Treasurer; Alfred Marozzi, Board of Directors; and Joseph Mile, Board of Directors.

Seated are Alphonse A. Mile, Past National President, and Augustine La Corte, Director of Eastern Expansion.

Engaged



Miss Katherine Kent

At a party at her home on Saturday Mrs. H. D. Kent, of 53 Pasca Avenue, Belleville, announced the engagement of her daughter, Miss Katherine Kent, to Stanley Waskowski, son of Mr. and Mrs. Zigmund Waskowski, of 25 Cortlandt Street, Nutley.

The prospective bride will be graduated from Belleville High School in June. Her fiancé is employed with the Apex Gear Company, of Newark.

Auxiliary 105, American Legion, Porties Veterans

The American Legion Auxiliary 105, Delegates Mrs. J. Johnson, Mrs. L. Donato, Mrs. E. Christ, Mrs. E. Ackerman, and Delegate-at-Large, Mrs. J. Heumer, attended the Essex County Auxiliary meeting yesterday at 8 p. m.

Monday, 105 Auxiliary will give a War B party at the East Orange Veterans Hospital, for 200 Veterans. Card games will be played followed by prizes and refreshments, served by Mesdames P. Johnson, L. Donato, A. Sharrock, W. Weiss, W. Konrad, A. Christie and J. Heumer. The chairman is Mrs. E. Ackerman.

The prospective bride will be graduated from Belleville High School in June. Her fiancé is employed with the Apex Gear Company, of Newark.

The prospective bride will be graduated from Belleville High School in June. Her fiancé is employed with the Apex Gear Company, of Newark.

The prospective bride will be graduated from Belleville High School in June. Her fiancé is employed with the Apex Gear Company, of Newark.

The prospective bride will be graduated from Belleville High School in June. Her fiancé is employed with the Apex Gear Company, of Newark.

The prospective bride will be graduated from Belleville High School in June. Her fiancé is employed with the Apex Gear Company, of Newark.

The prospective bride will be graduated from Belleville High School in June. Her fiancé is employed with the Apex Gear Company, of Newark.

The prospective bride will be graduated from Belleville High School in June. Her fiancé is employed with the Apex Gear Company, of Newark.

The prospective bride will be graduated from Belleville High School in June. Her fiancé is employed with the Apex Gear Company, of Newark.

The prospective bride will be graduated from Belleville High School in June. Her fiancé is employed with the Apex Gear Company, of Newark.

UNICO HAS DINNER DANCE ON SUNDAY

UNICO, the local chapter of a national Italian men's service organization, had a charter presentation and dinner-dance at Parillo's on Sunday, for 250 members.

Thomas Maghione, general chairman, presided the welcome. Rev. Titian Menegus, pastor of St. Anthony's Church, gave the invocation.

The dinner was followed by the officers of Thomas L. Greco as toastmaster, a clapper presentation by Augustine La Corte, eastern director of expansion, and a charter acceptance by Mayor Isadore J. Padula, president of the chapter.

Members of the officers and Board of directors was made by Eugene Boffa, national vice-president. They were as follows: president, Mayor Isadore J. Padula; vice-president, Michael Scudato; treasurer, Thomas Maghione; secretary, Frank De Marco, and sergeant-at-arms, Guy Matrasia.

On the board of directors are Peter S. Coccia, John D. Papisto, Vincent Pipitone, Thomas Maghione, secretary, Frank De Marco, and sergeant-at-arms, Guy Matrasia.

Alphonse A. Mile, past national president of the organization, was guest speaker at the affair.

Rev. Benedictus Pastal, pastor of the Italian Baptist Church, gave the benediction.

Woman's Club Hostess For Spring Conference

The Belleville Woman's Club will be hostess at the 8th District Spring Conference Luncheon which will be held at Wesley Methodist Church on Thursday. Speakers will be Mrs. C. Howard Sanborn, president of the State Federation of Women's Clubs; Mrs. Thomas H. McClellan, State chairman of International Relations; and Mrs. Charles L. Bowen, State chairman of Literature.

The Dakers' Dancers, a group of talented singers from the High School under the supervision of Dr. Samuel Pock, will sing. Michael Gallo will be soloist. Mrs. R. Clifford Whitfield, 85 Rossmore Place, who is the 8th District vice president, will preside.

Outstanding training for outstanding positions. Two practical courses: One-Year Secretarial • Liberal Arts-Secretarial (two years)

Personal placement service. Write or phone for catalog. MONTCLAIR, N. J. Plymouth 4-2010

DIRECT TO CENTER OF NEW YORK PORT AUTHORITY TERMINAL

The Best Way De Camp BUSES

Frequent, convenient service. Pleasant, relaxed riding. In fact, De Camp Buses are the heart of New York City. Ride in comfort from New York to New York. No nuisance of driving, no parking problem, no changing to ferry or tube. Save time and money.

Timetable Information Greyhound 1-2300 Clifton, N.J. De CAMP BUS LINES NEW JERSEY'S LINES

Helen V. Davis Circle Sees Film Monday Night

Monday, at 8:30 p. m., a film "The Stranger at Our Door" will be shown at the regular meeting of the Helen V. Davis Circle at Grace Baptist Church.

Miss Helen Coleham will be in charge of the meeting, with Mrs. David Farry and Mrs. Margaret Studier as hostesses.

Plans will be completed for a Baire Sale at the Belmont Street next Saturday.

Discussion Of Immunity At Montgomery PTA

The P.T.A. at Montgomery School No. Two will hold its regular monthly meeting Tuesday, at 8 p. m. in the playroom.

Dr. William Fost will speak about "The Importance of Immunity to Children."

Refreshments will be served at the close of the meeting.

Woman's Club Hostess For Spring Conference

The Belleville Woman's Club will be hostess at the 8th District Spring Conference Luncheon which will be held at Wesley Methodist Church on Thursday.

Speakers will be Mrs. C. Howard Sanborn, president of the State Federation of Women's Clubs; Mrs. Thomas H. McClellan, State chairman of International Relations; and Mrs. Charles L. Bowen, State chairman of Literature.

The Dakers' Dancers, a group of talented singers from the High School under the supervision of Dr. Samuel Pock, will sing. Michael Gallo will be soloist. Mrs. R. Clifford Whitfield, 85 Rossmore Place, who is the 8th District vice president, will preside.

Outstanding training for outstanding positions. Two practical courses: One-Year Secretarial • Liberal Arts-Secretarial (two years)

Personal placement service. Write or phone for catalog. MONTCLAIR, N. J. Plymouth 4-2010

DIRECT TO CENTER OF NEW YORK PORT AUTHORITY TERMINAL

The Best Way De Camp BUSES

Frequent, convenient service. Pleasant, relaxed riding. In fact, De Camp Buses are the heart of New York City. Ride in comfort from New York to New York. No nuisance of driving, no parking problem, no changing to ferry or tube. Save time and money.

Timetable Information Greyhound 1-2300 Clifton, N.J. De CAMP BUS LINES NEW JERSEY'S LINES

Social Notes

Mrs. Kenneth D. Smith, of 184 DeWitt Avenue, is spending the month of March vacationing in Tallahassee, Florida. She is accompanied by three local women, Mrs. Joseph Coccia, of 291 William Street, Mrs. Mary Kennedy, of 322 Stephens Street, and Mrs. Harold Gohman, of 65 Hay Avenue, Nutley.

The Past Presidents of Young Men's Club of 278 are meeting today at the home of Mrs. Jeanne Holey, at 66 Holmes Street.

The American Home Department of the Woman's Club met Monday at the home of Mrs. Donald F. Bowden. Mrs. William A. Baker discussed and demonstrated ideas for table decorations to be used for Easter.

The Evening Department of the Woman's Club is selling candy for Easter, proceeds of which will go to the Clara Maass Hospital. Mrs. Richard Taggart is in charge of the orders.

Mr. and Mrs. Louis Di Bella, of 159 White Oak Terrace, won first prize at an annual church March "Grass Saturday" night in Whippany. The Dibellias were dressed as "Diamond Jim Brady" and his "girl". This is the second year they have won in the event.

Mrs. R. Clifford Whitfield, of 85 Rossmore Place, represents the Newark Methodist Conference this week at a Women's Society Missions Conference at Buck Hill Falls, Pa.

Mr. and Mrs. Dominick Pascher, of 281 North Belmont Avenue, have announced the engagement of their daughter Jean to Frank Nigro, son of Mrs. Charles Nigro, of 86 Wallace Street, and the late Mr. Nigro.

Couples Clubs Meet At Wesley Methodist

The P.T.A. at Montgomery School No. Two will hold its regular monthly meeting Tuesday, at 8 p. m. in the playroom.

Dr. William Fost will speak about "The Importance of Immunity to Children."

Refreshments will be served at the close of the meeting.

Woman's Club Hostess For Spring Conference

The Belleville Woman's Club will be hostess at the 8th District Spring Conference Luncheon which will be held at Wesley Methodist Church on Thursday.

Speakers will be Mrs. C. Howard Sanborn, president of the State Federation of Women's Clubs; Mrs. Thomas H. McClellan, State chairman of International Relations; and Mrs. Charles L. Bowen, State chairman of Literature.

The Dakers' Dancers, a group of talented singers from the High School under the supervision of Dr. Samuel Pock, will sing. Michael Gallo will be soloist. Mrs. R. Clifford Whitfield, 85 Rossmore Place, who is the 8th District vice president, will preside.

Outstanding training for outstanding positions. Two practical courses: One-Year Secretarial • Liberal Arts-Secretarial (two years)

Personal placement service. Write or phone for catalog. MONTCLAIR, N. J. Plymouth 4-2010

DIRECT TO CENTER OF NEW YORK PORT AUTHORITY TERMINAL

The Best Way De Camp BUSES

Frequent, convenient service. Pleasant, relaxed riding. In fact, De Camp Buses are the heart of New York City. Ride in comfort from New York to New York. No nuisance of driving, no parking problem, no changing to ferry or tube. Save time and money.

Timetable Information Greyhound 1-2300 Clifton, N.J. De CAMP BUS LINES NEW JERSEY'S LINES

Rosellis Wed Fifty Years

Mr. and Mrs. Vincenzo Roselli of 36 Frederick Street, celebrated their 50th wedding anniversary Monday. They were honored at a dinner party given by their children Sunday night at Parillo's Restaurant.

Belleville residents for 33 years, the couple were born and married in Calitri, Italy. Mrs. Roselli is 70. Her husband, who is 72, is employed by St. Anthony's Church.

They have two daughters, Miss Vincenza Roselli at home and Mrs. Mary Alvino, of Newark; four sons, Thomas and Frank of Belleville, Anthony of Nutley and Vincent of Bloomfield; 16 grandchildren and one great-grand child.

WESLEY MEN TO ENTERTAIN LADIES

Monday evening, at 6:45 p. m., the Wesley Men's Club of Wesley Methodist Church will hold another "Ladies' Night" with a St. Patrick's corned beef and cabbage supper in the church dining hall.

T. Edward Anderson, publicity chairman, states that the club chief Clifford Kraft, "has acquired a secret formula for the supper from an ancient Irish Leprechaun."

After supper, a short business meeting will take place and then the guest speaker of the affair, William McMillen, will talk about his recent trip to Ireland.

Anderson also claims a program of games, fun, and good fellowship will follow. All Wesley men and their ladies are invited.

The last Sunday evening in the month will find the Wesley Men serving supper to church members taking part in Wesleyan Family Institute Lenten Mystery Program.

Father And Son Night Held By School No. 7

On Monday, at 7:30 p. m., the P.T.A. at School No. Seven will hold its annual Father and Son Program. A fashion show of hats made by the children will be modeled by the fathers.

Special prizes will be awarded for the most outstanding hats. Mothers are welcome to attend. Refreshments will be served.



The new models are all low and fast but each is different, so you shop around before you buy.

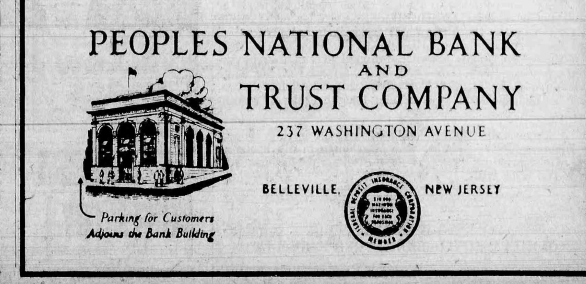
Auto financing differs, too. Select your financing as you select your car. You will find the rates are low and the service fast at the Peoples National Bank and Trust Company.

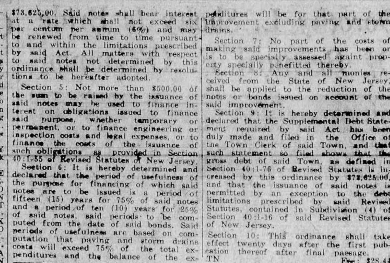
In financing your car here, you do more than save money, you establish a valuable credit record with a friendly bank.

3% Interest Paid On Savings

PEOPLES NATIONAL BANK AND TRUST COMPANY

237 WASHINGTON AVENUE BELLEVILLE, NEW JERSEY





NOBOKEN, N. J.

tion 2 be amended to read as follows:
Section 2. The said depart

members therein: One (1) Police Chief;
Two (2) Deputy Police Chiefs; One (1)
Police Captain; Four (4) Police Lieutenants;
One (1) Police Sergeant.

of whom shall be assigned by the Director of the Department of Public Safety to duty with the Detective Bureau of said Department; and, Patrolmen, the number of said Patrolmen to be determined by the necessity to properly provide police protection and safety within the said Town of Belleville, New Jersey.

Passed first reading: February 26, 1967
Passed second reading: March 4, 1967
Passed third reading: March 8, 1967
ADOPTED: March 8, 1967

ROBERT C. GRUBB
ELMER S. HYATT
KENNETH D. SMITH
HARRY J. SULLIVAN
Continued
ATTEST: FLORENCE R. MORE
Tn Town Clerk
Fee: \$0

Body and Fender Repairing
Expert Auto Repairing
Phone Nutley 2-6808
55 Washington Avenue, Nutley, N. J.

**Dignified
Funeral Service**

AVAILABLE TO ALL
REGARDLESS OF FINANCIAL
CIRCUMSTANCES

NON SECTARIAN


KIERNAN FUNERAL HOME
GEORGE F. KIERNAN
101 UNION AVE. BELLEVILLE, N.J.

PLYMOUTH 9-3503

Custom Royal Lancer 2-Door, one of 6 dashing D

Wing sweep

Orders do



Look around you
up to the fun a
'57 Dodge. (Incl
sold on other r

What's caused
doubled orders
makes other ca

EPT·WING

WILLIAM V. IRVINE & SON

"HOME FOR FUNERALS"

Our experience of more than fifty years gives assurance that our service is considerate and performed with reverence and dignity.

- Funeral Costs Should Never Be Beyond A Family's Means •

276 WASHINGTON AVE. BELLEVILLE N. J.
PLYMOUTH 9,1114

WILLIAM V. IRVINE SR. WILLIAM V. IRVINE JR.


You pay the
finest tribute
when you
call the

A
sympathetic
understanding
of all your problems
including the
avoidance of
needless expense

Wadsworth Funeral Home
524 UNION AVENUE BELLEVILLE, N. J.
Plymouth 9-2879
Noted for traditionally fine funerals



rdtops. You'd feel like a king (or queen) in any one of them.



front of this Custom Sierra faces the rear, and passengers board at rear, also.

s country!
bled on '57 Dodge!

The greatest advances of 1957: Torsion-Aire Ride, Push-Button TorqueFlite, Total-Contact Brakes. Luxury car looks and performance at a price just above the very lowest.

57 Dodge

ORS INC.


Belleville 9, N. J.

This is the Custom Royal Lancer 2-Door, one of 6 dashing Dodge hardtops. You'd feel like a king (or queen) in any one of them.

There's sports car thrill in handling. You sweep along in a heart of silence, master curves with race-car torsion bars, up to 310 m.p.h.

Swept-Wing sweeps country!

Orders doubled on '57 Dodge!



Look around you. People everywhere are stepping up to the fun and pride of owning a Swept-Wing '57 Dodge. (Including a great many who have been sold on other makes for years.)

What's caused this swing to Swept-Wing that has doubled orders over last year? Styling so fresh it makes other cars look "old hat" by comparison.

The greatest advances of 1957: Torsion-Aire Ride, Push-Button TorqueFire, Total-Contact Brakes. Luxury car looks and performance at a price just above the very lowest.

Find out for yourself why Swept-Wing is sweeping the country. See your nearby Dodge dealer and join the swing. . . . Go Swept-Wing!

It unleashes a hurricane of power
It breaks through the vibration barrier
It is swept-wing mastery of motion

SWEPT-WING '57 Dodge

BOSS MOTORS INC.

3 Washington Ave. Belleville 9, N. J.



SPECTACULAR SALE!

OF Famous BRANDS!

G.Q.M. Lean Boneless Brisket

CORNERED BEEF

Thick Cut 45¢ LB.
Thin Cut 55¢ LB.

G.Q.M. Tender Boneless

POT ROAST

Juicy and Full of Flavor 55¢ LB.

G.Q.M. Spring

LEG O' LAMB

Regular Leg 49¢ LB.
Oven Ready or Halves 55¢ LB.

COFFEE DOWN

Instant Coffee
NESCAFE'
6-oz. jar \$1.25

CHASE & SANBORN OR
Ehlers Coffee 1-lb. can 99¢
FULL BODIED
Coffee MARTINSON'S 1-lb. can \$1.15
MAXWELL HOUSE
Instant Coffee 6-oz. jar \$1.35
BORDEN'S
Instant Coffee 6-oz. jar \$1.13
SHOP-RITE-NO FATTENING OIL
White Tuna 3 7-oz. cans 89¢
SHOP-RITE-NO FATTENING OIL
Light Tuna 4 7-oz. cans \$1
FOR QUICK BAKING
Bisquick 40-oz. pkg. 39¢

Tri-Valley Elberta
PEACHES
3 29-oz. cans 89¢

INSTANT
Nestle's Coffee 4-oz. jar 81¢
CAMPBELL'S 10-oz. CANS
Clam Chowder 2 1-lb. cans 32¢
CAMPBELL'S 10-oz. CANS
Mushroom Soup 2 1-lb. cans 32¢
VEGETARIAN-VEGETABLE 10-oz. CANS
Campbell's Soup 2 1-lb. cans 25¢
SUNSHINE 1-LB. PKGS.
Krispy Crackers 2 1-lb. pkgs. 49¢
PRE-COOKED
Minute Rice 2 5-oz. pkgs. 27¢
BEECH-NUT STRAINED
Baby Foods 10 1-oz. jars 91¢
LARGE 10-oz. RING - DANISH
FRUIT AND NUT RING 39¢
TARTAN
COCONUT CREAM PIE 1-lb. can 49¢
FRESH CINNAMON
RAISIN BREAD 1-lb. loaf 25¢
SHOP-RITE ENRICHED
SLICED WHITE BREAD 16 1-lb. loaves 16¢

Savarin Coffee Coffee art 1-lb. can \$1.09
Chock Full O' Nuts Coffee 1-lb. can \$1.15
Sanka Coffee Caffeine Removed 1-lb. can \$1.09
Yacht Club Coffee 1-lb. can 79¢
Fifth Avenue Coffee 1-lb. can 73¢
Shop-Rite Instant Coffee 1-lb. can 99¢
Instant Coffee Chase & Sanborn 6-oz. jar \$1.15
Ehlers Instant Coffee 5-oz. jar \$1.19
Jomar Instant Coffee 1-lb. can \$1.25
Shop-Rite Mayonnaise 1-pint 35¢
Vel Liquid Detergent 16-oz. size 73¢
Calo Cat or Dog Food 1-lb. can 49¢

SHOP-RITE'S FINEST GUARANTEED QUALITY MEATS!

ALL LEAN BEEF
Chuck Chopped 1-lb. 55¢
LOIN
Lamb Chops 1-lb. 89¢
LEAN CHUCK
Beef For Stew 1-lb. 55¢
ARMOUR STAR
HOLDING
CHICKENS
ON SALE AT
SHOP-RITE'S
TYPICALLY LOW PRICES
DELICIOUS WITH OCEAN SPRAY STRAINED
CRANBERRY
SAUCE 2-lb. can 34¢
HORMEL 4-OZ. PKG.
Hard Salami 39¢
FRESH FILLET OF
Haddock 1-lb. 49¢
FRESH
Cod Steaks 1-lb. 39¢

For The Finest Variety of
FRUITS and VEGETABLES
Priced Right... Shop-Rite

Birds Eye - No Bone, All Clean Cod, Haddock, Perch - Your Choice
FISH FILLETS 5 12-oz. PKGS. \$1
Orange Juice Shop-Rite Grade A 6 6-oz. CANS 79¢

CODFISH CAKES, FILLETS OR FISH STICKS
Mrs. Paul's Fish 3 8-oz. pkgs. \$1
Wakefield Crab Meat 8-oz. can 65¢
Birds Eye Fish & Chips 12-oz. can 33¢
Birds Eye Seafood Mix 8-oz. can 49¢
Libby's Orange Juice 3 12-oz. cans 45¢
Birds Eye Orange Juice 4 12-oz. cans 59¢
Birds Eye Peaches 12-oz. can 25¢
CONGA
LOBSTER TAILS 10 1-oz. pkgs. 79¢
Heat & Serve Waffles 5-oz. pkg. 10¢
Birds Eye French Fries 2 10-oz. bags 29¢
Birds Eye Garden Peas 3 10-oz. bags 47¢
Whole Strawberries Cranford Hall 1-lb. can 39¢
Birds Eye Chopped Broccoli 10-oz. can 19¢
Birds Eye Baby Limas 2 1-lb. cans 49¢

Sweet Butter Land O' Lakes Farm-Fresh! 1-LB. PKG. 69¢
Cream Cheese Your Choice 2 4-OZ. PKGS. 35¢

Seven Assorted Flavors-Paramount
Domestic Baby Goudas 8-oz. can 33¢
Provolone Slices 8-oz. can 31¢
Imported Swiss Slices 6-oz. can 55¢
Reddi-Wip Instant Topping 1-lb. can 53¢
Allsweet Margarine 1-lb. can 31¢
Breakstone Cottage Cheese 1-lb. can 31¢
Vita Lunch Herring 1-lb. can 45¢
Plain Dannon Yogurt 2 4-oz. cups 35¢
Strawberry Dannon Yogurt 2 4-oz. cups 22¢
Sharp Cheddar Cheese 1-lb. can 69¢
Ideal Dog Food 3 15-lb. cans 39¢
Del Monte Grapefruit Sections 2 17-oz. cans 34¢
Shop-Rite Prune Juice 12-oz. can 25¢
Sacramento Tomato Juice 2 12-oz. cans 25¢
Sunsweet Prune Juice 12-oz. can 30¢
Del Monte Drink Pineapple-Orangefruit 12-oz. can 27¢
Realmon Drinks Orange, Lemon, Lime 4 4-oz. cans 50¢
Fab Detergent 1-lb. can 28¢
Surf Detergent 1-lb. can 65¢
Del Monte Drink Pineapple-Orangefruit 12-oz. can 27¢
Gim Detergent In plastic container 12-oz. size 27¢
Dazzle Laundry Bleach 1-lb. can 29¢
Alcoa Aluminum Foil Heavy Duty 1-lb. can 45¢
Meadow Gold Ice Cream All Flavors 1-lb. can 89¢
Mott's Applesauce 1-lb. can 29¢
Swift's Prem For quick meals! 2 7-oz. cans 79¢
Swift's Shortening 3 1-lb. cans 85¢
Cake Mixes Bromated White, Devils or Yellow 4 1-lb. cans \$1
Lipton Noodle Soup 1-lb. can 32¢
Lipton's Onion Soup 2 4-oz. cans 28¢
Lipton's Tea Bags 1-lb. can \$1.02
Johnson's Jubilee Wax 1-lb. can 59¢
Cocoa Marsh For Delicious Drinks 2-lb. can 52¢
Johnson's Hard Gloss Glo-Coat 1-lb. can \$2.45
Vanity Fair Toilet Tissues 4 4-oz. pkgs. 37¢

WHY PAY MORE?

Stockton California
TOMATOES
5 29-oz. cans \$1

QUICK COOKING
Minute Rice 15-oz. pkg. 34¢
KLEENEX TABLE
Napkins 2 pkgs. of 50 43¢
SHOP-RITE
Grape Jelly 6 12-oz. jars \$1
HUNT'S
Tomato Juice 46-oz. can 25¢
HEARTS DELIGHT
Apricot Nectar 46-oz. can 37¢
BLUE RIBBON
Napkins 1-pkg. of 80 10¢
SHOP-RITE
Strawberry, Pineapple, Apricot, Peach 12-oz. jars 4 for \$1

Gold Medal or Pillsbury
FLOUR
10 1-lb. bags 89¢

HOLLAND DUTCH TREAT
Ice Cream half-gallon 69¢
ALL VEGETABLE SHORTENING
Spry 3 1-lb. cans 89¢
GRANULATED
Sugar 5 1-lb. bags 48¢
HEART'S UNBLEACHED
White Flour 5 1-lb. bags 48¢
LA ROSA NO. 8 & NO. 9
Spaghetti 2 16-oz. pkgs. 37¢
SHOP-RITE
Mayonnaise 1-quart 59¢
SHOP-RITE
Salad Dressing 1-pint 29¢
SHOP-RITE
Salad Dressing 1-quart 47¢

MAZOLA OR WESSON OIL
1-pint 37¢ 1-quart 67¢ 1-gallon \$2.19

Bon Ami Jet Spray 18-oz. can 55¢
Shop-Rite Facial Tissues 2 400 39¢
Shop-Rite Wax Paper 100-01 19¢
Campbell's Pork & Beans 2 16-oz. cans 25¢
Hanover Pork & Beans Serves 12 40-oz. can 29¢
Pride of the Farm Tomatoes 2 16-oz. cans 25¢
Del Monte Whole Beets 6 1-lb. cans \$1
Tri-Valley All Green Asparagus 3 1-lb. cans 36¢
Green Giant Sweet Peas 2 17-oz. cans 36¢
Shop-Rite Evaporated Milk 3 1-lb. cans 38¢
Shop-Rite Applesauce 3 1-lb. cans 49¢

Church Bulletin

ST. PETER'S R.C.
Sunday — Masses at 6, 7, 8, 9, 10, 11, and 12 noon. The 9 o'clock mass is a high mass sung by the children. Masses are also offered at 9:05 and 10:05 in the school auditorium. Benediction of the Most Blessed Sacrament follows the 11 o'clock mass. Baptism at 2 p.m.

ST. ANTHONY'S R.C.
Sunday — Masses in the church at 7:30, 9, 10, 11, and 12 noon. In the chapel at 9 and 11:15. Sunday school will follow the 9 o'clock children's mass.

MONTGOMERY PRESBYTERIAN
Rev. Oliver W. Chapin
Sunday, 9:30 a.m. — Men's bible class.
9:30 a.m. — Sunday school (2 yr. old primary through high school).
9:30 and 11:00 a.m. — Worship Services. Junior church at 11:00 a.m. service.
6:15 p.m. — Youth programs, youth choir, young people's societies.

CHRIST EPISCOPAL
Rev. Peter R. Deckenbach
Sunday, 7:30 a.m. — Holy Communion.
9:30 a.m. — Church Sunday School services.
11:30 a.m. — Morning prayer and sermon.

SILVER LAKE BAPTIST
Rev. Benedetto Pascale
Sunday, 10 a.m. — Bible School.
11 a.m. — Church Worship.
Friday, 3:30 p.m. — Junior Choir Rehearsal; 7 p.m., High School Choir; 8 p.m., Senior Choir.
Holy Communion is administering every first Sunday of the month at 8:30 p.m.

GRACE BAPTIST
Rev. Albert V. Lawson
Friday, 7:30 p.m. — Men's club bowling league.
Saturday, 7:00 to 9:00 p.m. — Youth game night, including bowling, ping pong, shuffle board.
Sunday, 9:45 a.m. — Church School. Classes for all age levels.
11:00 a.m. — Morning Worship, sermon by the pastor, Rev. Albert V. Lawson, "Windows of the Soul."

LIVE BETTER ELECTRICALLY with FULL HOUSEPOWER
Outlets, Switches, New Homes Wired, Old Homes Rewired Free Estimates
LARSON'S ELECTRIC SERVICE
658 Belleville Ave., Belleville, N. J.
Call Evenings PL. 9-9262

Sunday, 7:30 p.m. — The Baptist Youth Fellowship will attend the East Association BYF Rally at the First Baptist Church of Rahway.
Monday, 7:45 p.m. — North District of New Jersey Conference on Lay Development will be held at the State Convention Headquarters, 231 Main Street, East Orange.

Monday, 8:00 p.m. — Helen V. Davis Guild meets at the home of Janet Lay, 25 Myrtle Avenue.
Wednesday, 9:45 p.m. — Junior choir rehearsal.
6:45 p.m. — Intermediate Girls' Troop.
7:30 p.m. — Christian Education Conference at the First Baptist Church, East Orange.

8:00 p.m. — Choir rehearsal.
Thursday, 7:30 p.m. — Officers and Teachers of the Church School will meet at the home of Marge Cooper, 60 Beech Street.

WESLEY METHODIST
Rev. Clifford A. Hewitt
Sunday, 9:30 a.m. — Meeting at Masonic Temple.
Sunday, 9:45 a.m. — Sunday School and Adult Bible Class.
11:00 a.m. — Service of Worship.
Nursery care for children is

provided at this service.
8:00 p.m. — Youth fellowship hour.
Wednesday, 7:30 p.m. — Boy Scouts, troop 301.
Thursday, 6:45 p.m. — Youth choir rehearsal.
8:00 p.m. — Chancel Choir rehearsal.

LITTLE ZION UNION A.M.E. CHURCH
OF GOD
Rev. Mary A. Farrar
Sunday, 9:45 a.m. — Church School.
11:00 a.m. — Morning Worship.
BELLEVILLE ASSEMBLY

Pastor Anselmo Carneiro
Sunday, 9:30 a.m. — Sunday School Classes for all ages.
11:00 a.m. — Morning Worship.
English Service.
Monday, 7:30 p.m. — Italian Service.
Wednesday, 7:45 p.m. — English Service.

FEWESMITH PRESBYTERIAN
Dr. James K. Morse
Friday, 7:30 p.m. — Cub Pack meeting.
Saturday, 7:30 p.m. — Senior High Fellowship Bowling.
8:00 p.m. — Joint Couples Club meeting at Wesley Methodist Church.
Sunday, 7:30 a.m. — Presbyterian Men's Communion Breakfast. Speaker, the Rev. Donald (Continued On Page Three)

Who do you know in Virginia?

Norfolk... 70¢
Richmond... 70¢
Roanoke... 85¢

IT COSTS LITTLE TO PHONE ANYWHERE...

3-minute station rates from Newark after 6 p.m. and Sundays. Tax not included.

for Dependable
FUEL OIL
and
OIL BURNERS

24hr. SERVICE
7 DAYS A WEEK

Market 3-4000 ORANGE 3-2200
ECONOMY SERVICE, INC.
525 Raymond Blvd., Newark, N. J.

ITS
RED CROSS
TIME

PLEASE GIVE

Space contributed by Public Service

You get so much more at Acme

CASH SAVINGS PLUS S&H GREEN STAMPS

LANCASTER BRAND "U. S. CHOICE" BEEF

CHUCK ROAST

Acme rigidly follows a policy of offering only top-quality beef! The finest corn-fed quality, of a specific size and weight!

lb. **29¢**

FROSTED FISH FEATURES

Fillet Pollock	TASTE O' SEA	lb. pkg.	27¢
Fillet Mackerel	TEDDY'S	lb. pkg.	33¢
Frogs Legs	EMPRESS	8 oz. pkg.	79¢
Lobster Tail Meat	EMPRESS	lb.	1.39
Yellow Pike		12 oz. pkg.	69¢
Silver Bass		12 oz. pkg.	49¢
Fish Sticks	TASTE O' SEA	16 oz. pkg.	49¢
Fish Bites	BIRDS EYE	8 oz. pkg.	25¢
Scallops	RED-L — PRE-COOKED	7 oz. pkg.	49¢
Shrimp	RED-L — PRE-COOKED	7 oz. pkg.	59¢

DAIRY DELIGHTS

Cheez-Whiz	KRAFT'S DELICIOUS	8 oz. jar	25¢
Velveeta	KRAFT'S TANGY	2 lb. pkg.	79¢
Cream Cheese	Phila. Brand	2 3/4 pkg.	27¢
Kraft Sharp	Cracker Barrel	8 oz. pkg.	41¢
Extra Sharp Cheese	New York Style	8 oz. pkg.	79¢
Natural Swiss Slices	Kraft	8 oz. pkg.	41¢
Kraft Old English Slices		8 oz. pkg.	41¢

IDEAL EGGS

ALL WHITE STRICTLY FRESH MEDIUM SIZE **3 doz. 1.29**

Parkay COLORED MARGARINE **2 lb. pks. 55¢**

Fancy Fowl	CUT-UP — READY FOR POT	lb.	39¢
Cross-Rib Beef	LANCASTER BRAND BONELESS	lb.	69¢
Corned Beef	LANCASTER BRAND BONELESS BRISKET	lb.	69¢
Ground Beef	FRESH	3 lbs.	98¢

FRESH FRUITS AND VEGETABLES

FANCY WESTERN ICEBERG

LETTUCE 2 heads **19¢**

U. S. No. 1 WASHED MAINE RUSSETS

POTATOES 10 lb. bag **39¢**

GOLDEN RIPE

BANANAS lb. **12¢**

SERVE A TASTY SALAD

ESCAROLE 2 lbs. **15¢**

RADISHES FANCY 6 oz. 7¢
FLORIDAS pkg.

CHICORY TANGY 2 lbs. **19¢**
FLORIDA

FREE! LOAF OF **SUPREME BREAD** IF CHECKER FAILS TO MENTION BREAD.

BAKERY DEPARTMENT

VIRGINIA LEE PLAIN, SUGAR or CINNAMON

Donuts pkg. of 12 **23¢**

SUPREME PLAIN or ICED

Raisin Bread

SLICED LOAF **20¢**

FROZEN FOOD FEATURES

BIRDS EYE

PEAS

2 10 oz. pks. **25¢**

BIRDS EYE — SPEARS

Broccoli 2 10 oz. pks. **39¢**

BIRDS EYE — SLICED

Strawberries 2 10 oz. pks. **39¢**

DOLE PINEAPPLE

Juice 4 46 oz. cans **\$1.00**

HUNT'S STEWED

Tomatoes 2 14 1/2 oz. cans **33¢**

NABISCO

Ritz Crackers 1 lb. pkg. **33¢**

Juice HUNT'S TOMATO 4 46 oz. cans **\$1.00**

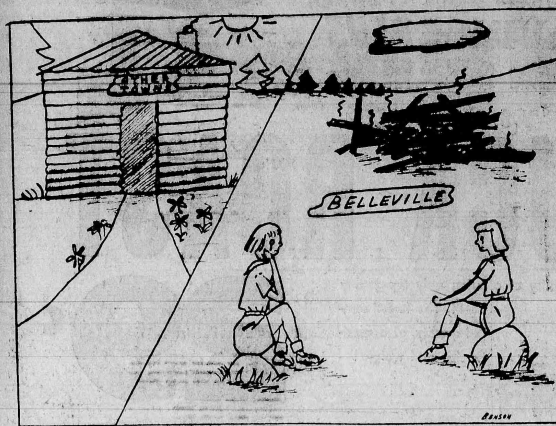
Miracle Whip 16 oz jar **31¢**

Sauce HUNT'S TOMATO 6 8 oz. cans **45¢**

Grocery, Dairy, Frosted Food Prices Effective Through Wednesday, March 20th; All other prices effective through Saturday, March 16th.

ACME GIVES S&H GREEN STAMPS!

Local Girl Scouts Out In The Cold



THE BELLEVILLE TIMES-NEWS
ADVERTISING, NEWS AND BUSINESS OFFICE
428 WASHINGTON AVENUE
RALPH E. MEYNER, Editor and Publisher
Arnold M. Bloom, News Editor

First Robin

He had come early. Every other bird
Still left in southern warmth, agreed the
act
Was what they might expect of him—
absurd—
He'd always favored fancy more than fact.
There was late snow, but there were
crumbs to eat,
And every day gave cause for him to sing!
His feathered fellows did not guess how
sweet
He found the first green tracery of spring!

Lee Avery

Meyner Woos GOP Voters

Governor Robert B. Meyner is too astute a politician not to know that he cannot be re-elected next November without Republican votes. It is no secret to him or to us that this state rolled up a smashing 750,000 plurality for President Eisenhower last November. Even Hudson County flew Republican colors that time. We can expect, therefore, that between now and November the Governor will make an out-and-out bid for the support of those independent Republicans to whom the "old pros" are anathema.

It is regrettable, therefore, that right here in Essex County, which should be a rock-ribbed fortress of Republican plurality, the Republican county leadership and those who control a majority of the board of trustees of Clean Government Republican, Inc., should resort, still, to the shoddy strategy of machine politics.

Letters To The Editor

Editor, Belleville Times-News:

Grant satisfaction was derived by the taxpayers group seeking budget slashes of Belleville's Town Commissioners. The diligently prepared recommendations designed to effect economy and efficiency in the operation of our town government were ignored, in substance, by the people's representatives.

The Commissioners chose to flout the wishes and sentiments of their subjects by ignoring them. They hurled a defiant challenge at the voters, insisting they would "stand up" to the "taxpayers" and "fatened" the town. Not the slightest effort was made to consider, fairly, the urging of economy submitted by sincere, intelligent public spirited citizens banded together in an association to combat prodigal waste and outright padding of departmental payrolls with extra personnel at public expense.

Editorial opinion of the local press, insisting the Commissioners must review in good faith the recommendations, was likewise kelly ignored. These men apparently have little sympathy with taxpayers' principles. They prefer to pad down their noses at any proposal devoted to the cause of improving the fabric and stability of our local government.

It becomes a pathetic situation when official indifference to ensure efficient, economic and business like management of our town's budget becomes the target of fiscally reckless attacks, complete with malice, vilification and unfairness. Such treatment, too frequently, is the just cause for the discouraging reward meted out to civic minded and dedicated people. In substance, the public opinion demands that a halt be called to such perverse performances by our governing officials. ("Don't want meat do these our Cæsars feed that they have grown so great.") (Shakespeare's Julius Caesar: Act I, Scene II.)

We often hear the gratuitous charge made by the most politically active members of our society, our "commissioners," that this or that complaint leveled at them is politically inspired. It is a poor defense, but were it true, let us examine what Justice Jacobs of the State Judiciary has to say on the subject. When a committee is engaged in impartial investigation, having legitimate public ends, it is not material that political motivation is also present.

The jurist continues, "any other view would defeat the many public investigations, which while perhaps resulting in anticipated political advantage, also serve society by unearthing

NEW RESPONSIBILITIES need the maximum protection provided by our low cost Family Income Benefit.

Talk it over with the Man from Manufacturers Life

One Man's Opinion

Western Unity Is Still Very Much Under Strain
And We Must Decide What To Do
For Poland And Yugoslavia

By Ralph Eric Helms

The long-delayed approval by Congress of the Eisenhower Doctrine for the Middle East, coming on top of Washington's success in negotiating the withdrawal of Israeli armed forces from Gaza and Aqaba, and the victory in itself. It is merely a step on the long way back from the crisis which was foisted upon a shocked world when France, Britain and Israel decided to send their troops into Egypt and take what they thought was theirs.

There remains ahead the exceedingly ticklish diplomatic task of reviving the ailing Western Alliance while conducting exploratory operations towards Warsaw and Belgrade to try and appease the desires of Poland and Yugoslavia to get the aid from the West which they sacrificed in widening the breach between them and Moscow. And Cairo must be convinced to carry out its bargain to allow equal transit rights to all nations seeking to use the canal.

The Western Alliance stands today like a big, partly ashen, and somewhat neglected house to which the inhabiting family has begun to pay a sort of reluctant attention. While some of the leading members of the family are working on repairs to the central portion of the house, erosion still eats at the wings.

This is illustrated by the effect which Britain's attempts to entice back its armed forces in Europe have had on Western opinion in the last few days. Misgivings about British plans have been evident in Washington for some time. Now these misgivings are being voiced by other members of the Atlantic Alliance.

Germany Holds Off

The sharpest criticism is coming from West Germany which is in a poor position to criticize others about their contribution to Western defense. A complete contribution of manpower is still being awaited from prosperous West Germany.

Britain is acting less than warmly in the matter of committing armed forces to Europe—namely, that economic necessities might force cutbacks.

But the British move does seem to reflect what has become a tendency among the Western Allies to put certain national interests in the foreground of the collective interest. In any form or another this has been expressed in the aid of the Channel and both sides of the Atlantic.

If this attitude had ruled in 1945, it would have been an Atlantic unity capable of impressing Communist aggressors. But in those days events in Czechoslovakia and later Korea insured an order of priorities which kept Western collective defense well to the fore.

Money Sways British

Diaphanous about armed forces are confused these days because of a transformation in methods of financing. And it is not the British decision as such but a certain arbitrariness in London which is the other side of the coin.

Britain has done more than its share in the past—until the Suez affair. But now that London wants to cut back we find the problem made more difficult because it is complicated by those problems that should have been worked out earlier in Allied consultation but were not.

Cause Of Strain

Thus the alliance comes under new strains in certain sections while efforts to strengthen its core are only beginning. It becomes more evident each day that the trend will not be corrected by tackling individual problems such as cutbacks in the present atmosphere and present state of alliance machinery.

What is needed is a broad new effort to make the alliance work in the many areas it must inevitably bear even in the best possible circumstances.

The West is confused and divided. Confused and divided it proceeds with purposes which demand unity, as even its own minimum security does. To state the problem is to state the remedy. But to provide the remedy will take a great deal of head-scratching, supported by public understanding that the increased subtlety of cold war maneuvers is a recent months call for more and not less Western unity.

Talks With Poles

Washington is currently holding

how had public relations and, particularly, deep and inadequate preparation of public opinion in Europe. The visit to this country to collapse and how Mayor Wagner, in New York City, almost refused to see King Saud by his stupid boy-cot.

The United States is giving considerable aid to Poland and Yugoslavia, but such action has always been carefully explained before and after the fact in the United States.

With Yugoslav-Soviet relations currently reverting to their old antagonisms, United States aid to Belgrade will unquestionably be continued but only with congressional approval.

Tito's Special Status

Belgrade, however, is in a unique position in the Communist world in that Red Army interference in Yugoslav affairs whatever form it takes, is welcomed; whereas the Soviets would have no hesitation in using their troops to crush any such friendly and sympathetic regimes in office. United States aid to Yugoslavia will continue because of the mounting tension between Belgrade and Moscow; whereas United States aid to Poland, whatever form it takes, is welcomed on Warsaw staying in Moscow's good graces.

The Poles' principal interest is to acquire surplus agricultural products such as wheat, corn, cotton, fats, and oils. They would also like credits to buy agricultural and mining machinery.

Secretary Dulles, last December, made Poland eligible for agricultural supplies by a bill that Poland, while Communist, was not a full-fledged satellite, but had a certain amount of national freedom. Warsaw is now eligible to receive surplus agricultural products.

There is some question as to where credits for Poland might come from. It might be difficult to include them in a foreign aid program because of Congressional hesitation to help a Communist regime.

The President does have, under current legislation, an emergency fund for such purposes. The administration is currently pressing for greater freedom in using foreign aid funds—and these talks with the Poles are an illustration of why flexibility is needed.

However, it may turn out to be an unfortunate illustration, for while congressmen may be willing to give the president authority to use funds as he wishes to bolster recognized anti-Communist regimes, not a few will have serious

thoughts about letting him give help to acknowledged Communist governments.

There have been reports that the Poles were seeking as much as \$100,000,000 in surplus farm products and credits. However, there is reason to believe that if assistance to the amount of \$100,000,000 were arranged, the talks would be considered a success by Warsaw.

This is the first time that the United States has gone into public talks with a Soviet satellite on aid matters. It has never, though, there is reason to believe that if the United States gave the aid that Poland would otherwise have to get from the U. S. S. R.

It is all very ticklish diplomatic business which can quickly sour if not expertly handled. However, with American and Polish negotiators aware of the stakes involved, both are showing more than usual discretion in the discussions.

tors aware of the stakes involved, both are showing more than usual discretion in the discussions.

Roulois Votes Approval Of Eisenhower Doctrine

Congressman Peter W. Rodino, Jr., voted in Congress this week, to approve the Eisenhower Doctrine which won the support of the lower house, 350 to 60. The District Congressman told The Times-News, "I will support the President fully in his efforts to forestall any Communist aggression or intervention in the Middle East."

All of New Jersey's Congressmen, Democratic as well as Republican, voted solidly to approve the Eisenhower Doctrine. Of the 27 Republicans, chiefly from the Middle West, voted against the doctrine's passage.

OUR CLASSIFIED ADS
BRING QUICK RESULTS

LAY THAT IRON DOWN,
BABE...
Lay that Iron
Down!

That happy thought can now become a reality for you, thanks to IRONRITE's Automatic Ironer rental plan.

Only \$2.00 a week rents a famous IRONRITE to perfectly iron everything in your wardrobe... in 1/3 the time. This amazing automatic appliance, with the exclusive 2 double open ends, lets you sit down, relax and comfortably, as you guide your press through.

To feel and look better, to enjoy many extra leisure hours, rent an IRONRITE Automatic Ironer now. \$2.00 a week covers everything... delivery, personal home instruction and service... there are no other charges you desire, you may purchase your IRONRITE and save rental costs.

Phone or Write
Ironrite
OF NEW JERSEY
Authorized Sales and Service
855 Bloomfield Ave. Glen Ridge, N. J.
Pilgrim 3-4803

PROFITABLE AND CONVENIENT!
SAVING FOR YOU

LATEST
QUARTERLY DIVIDEND
at the rate of
%
per annum

at the rate of
%
per annum

DIVIDENDS FROM DAY OF DEPOSIT
Compounded and Credited
4 TIMES A YEAR
ON ALL BALANCES OF
\$10 TO \$25,000
INDIVIDUAL AND CORPORATE ACCOUNTS

The
HOWARD SAVINGS
Institution
New Jersey's Largest Savings Bank—Established 1857
Member Federal Deposit Insurance Corporation

MAIL THIS COUPON NOW—
The Howard Savings Institution, 760 Broad St., Newark 1, N. J. BN 12D
I enclose \$_____. Please open a savings account as checked below:
☐ Individual Account in my name.
☐ Joint Account with _____
☐ Send me postage-paid envelopes and banking-by-mail forms.
NAME _____
ADDRESS _____
CITY _____ ZONE _____ STATE _____
Send check or money order. If you send cash, use Registered Mail.

RADIO - TV
CAR RADIO
PHONOGRAPH
REPAIRS
All Work Guaranteed
Call NY 2-7681
Jersey TV & Music Shop
303 Franklin Ave. New York

FREE PARKING At All Branches
FREE POSTAGE-PAID ENVELOPES
FOR BANKING BY MAIL
Phone Mitchell 3-1080 or send the coupon.
1956-1957 One Hundredth Anniversary Year

MANUFACTURERS LIFE

LETTERS

To The Editor

Editor, Belleville Times-News:

You are to be commended for your excellent editorial on the Town Budget and the overburdened Taxpayers. This new article is also a tribute to the group of civic minded residents who feel that the time has arrived for corrective action. This editorial should tend to awaken all residents and industry of Belleville, that now is the time for a realistic Budget and a more efficiently operated government.

A brief comment on the Budget hearing held at the high school. I refer to the verbal abuse which was directed at citizens who expressed their views on the budget. This type of attitude would never have arisen, if the meeting were better controlled. If these hearings are supposedly under parliamentary procedure, why was there a lack of preservation of order?

Is it possible that some of this abuse came from town employees? If this is so, I find it very difficult to believe that loyal and faithful employees would stoop to such low tactics. I have personally met some of our town workers and found them to be helpful and cooperative. If the source of this abuse is true, then it is my belief that the town of Belleville has reached a new low. Equal opportunity was given to all who wished to speak at the meeting. There was no excuse for ridicule from the floor.

My inquiry is this: Will this abuse stop? Will it reach the stage of bodily harm? Or possibly violence of some nature? Will it make residents fearful to appear at town hearings in the future? Does it present an attempt to suppress the right of free speech?

A better controlled meeting in the future with elimination of abuse, should be a must for those who administer at these public affairs.

G. J. Turtorello

Church Bulletin

(Continued From Page One)

Lester.
Sunday, 9:30 a.m. — Church School. — Classes for all grades. Nursery through high school.
11:00 a.m. — Pre-school children will be taken care of in special hall.
11:00 a.m. — Worship service. Sermon by Dr. Morse, "Judgment of God." Music under the direction of Miss Hazel Ellsworth. Fellowship meeting. Guest speaker, Mr. Paul Conine.
8:00 p.m. — Spring training preview meeting for church school teachers at First Presbyterian Church, Bloomfield.

Monday, 8:30 p.m. — Girl Scout and Brownie troop meetings.
Tuesday, 8:30 p.m. — March meeting of the Fellowship Circle.
8:00 p.m. — Meeting of the Board of Trustees.
8:00 p.m. — Lenten service. Worship by Mrs. Harold Snook. Motion picture "Eastward to Asia," a report on Billy Graham's recent tour.

Wednesday, 10:30 a.m. — Retired Men's Club meeting.
8:45 p.m. — Junior Choir Rehearsal.
8:00 p.m. — Chancel Choir Rehearsal.

Thursday, 8:00 p.m. — Meeting of the Board of Elders at home of Mrs. James Dunn, 171 Jordanmon Street.

BELLEVILLE REFORMED

Sunday, 9:45 a.m. — Church School, classes for all ages.
10:30 Morning Worship.
2:30 p.m. — Reformed Youth Fellowship group will meet for devotion at chapel.
Thursday, 8:00 p.m. — Choir rehearsal.

BETHANY LUTHERAN

Rev. T. Painter Hanson
Friday, 8:00 p.m. — Meeting of the Brotherhood.
Sunday, 9:30 and 11:00 a.m. — Worship Service. Sermon, "What Do We Remember?"
11:00 a.m. — Dedication of Shaded Olive Windows of the "Good Samaritan" in memory of Albert Helm.
Monday, 8:00 p.m. — Sunday School Teacher's meeting.
Wednesday, 8:00 p.m. — Ash Wednesday communion service.

Five Local Students In ASME At Newark School

Five students from Belleville have been initiated into the student chapter of the American Society of Mechanical Engineers at Newark College of Engineering, according to Professor Jerome Weinstein, faculty adviser. They are Richard Battistelli, of 11 Maple Avenue; Nick Cocco, of 13 North Eighth Street; Robert G. Groulich, of 311 Stephens Street; Albert D. Johnston, of 16 Minko Place; and William J. Wagon, of 107 Linden Avenue. The object of the ASME is to promote through its student chapters a professional spirit among its members and to provide a source of contact with practicing engineers.

FURNITURE
products
JUST LOOK IN THE
YELLOW
PAGES
OF YOUR PHONE BOOK

FOOD FLAVER

Presents A Terrific Weekend Part Day! Pamper Your Palate and Your Purse

PORK LOIN ROAST

Serve With **FRE-MAR APPLESACRE**

RIB END 27[¢] lb. **LOIN END 37[¢] lb.**

Rib Half FULL CUT lb. 39[¢] **Loin Half FULL CUT lb. 49[¢]**

Serve With Delicious Long Cut **Pixie Sauerkraut 2 lb. bag 29[¢]**

Sausage Meat lb. 39[¢]

Ducklings Long Island lb. 47[¢]

These Foods Are MEANT FOR LENT

FRESH CAUGHT—Large Butterfish lb. 29[¢]
FRESH CAUGHT—Like Whitefish lb. 69[¢]
FRESH TENDER Scallops Deep Sea lb. 79[¢]

IMPORTED—Sliced Boiled Ham 1/2 lb. 33[¢]
SLICED—White or Colored American Cheese lb. 49[¢]
Kitchen Fresh Cole Slaw lb. 33[¢]
Kitchen Fresh Vegetable Salad lb. 31[¢]

Bakery Dept. Feature LADY FAIR—Assorted (Reg. 69¢) Layer Cakes spec. 59[¢]

Food Fair Presents a Sensational Customer Service Feature!

THE Bible Story LIBRARY

Only **\$1.00** PER VOLUME

COMPARE WITH OTHER AT \$3.50 UP

YOUR PRICELESS HERITAGE IN 4 MAGNIFICENT VOLUMES

- Hundreds of Pictures
- Dozens of Color Plates
- Beautifully Bound
- Superbly Printed

Buy a Book A Week at Food Fair Volume No. 1 — Now on Sale!

Hi Hat	Dash
Peanut Oil	Dog Food
2 pint 39 [¢]	3 lb. 43 [¢]
Camay	Dash
Pink Soap	Detergent
2 bath size 25 [¢]	25 oz. pkg. 37 [¢]
Lipton	Ivory Soap
Orange Pekoe	99 44/100% Pure
Tea	2 large size 29 [¢]
1/4 lb. 43 [¢]	Tide
Tea Bags	The Washday Miracle
pkg. of 48 63 [¢]	giant pkg. 75 [¢]

Fresh Produce Low Low Prices... PLUS Merchants Green Stamps

CALIF. — Tender Asparagus Long Green Spears lb. 29[¢]
FLORIDA — Crisp Pascal Celery Hearts pkg. 23[¢]
LUSCIOUS — Ripe Jumbo Pineapples .. 35[¢]

FRE-MAR... YOUR GUARANTEE OF OUR HIGHEST QUALITY!

Fre-Mar Tomato Juice 46 oz. 29[¢] **Fre-Mar Sweet Peas Run of the Pod 2 lb. 35[¢]**
Fre-Mar Fruit Cocktail 30 can. 33[¢] **Fre-Mar Peaches Yellow Chng 29[¢]**
Fre-Mar Corn Cream Style or Whole Kernel 2 16 oz. 25[¢] **Fre-Mar Tuna Light Meat Chunk Style 2 cans 49[¢]**
Fre-Mar Green Beans French Style 3 16 oz. 49[¢] **Fre-Mar Beets Sliced-Small 2 cans 25[¢]**
Fre-Mar Grape Jelly 12 oz. 19[¢] 24 oz. 37[¢] **Fre-Mar Bartlett Pears 17 can. 25[¢]**

Fre-Mar Grapefruit Juice 2 8 oz. 25[¢] **Fre-Mar Sweet Potatoes 2 2 1/2 lb. 49[¢]** **Fre-Mar Big Sweet Peas 2 1/2 lb. 25[¢]**
Fre-Mar Blended Juice 2 8 oz. 25[¢] **Fre-Mar Tomatoes 19 oz. 19[¢]** **Fre-Mar Green Beans French Style 2 1/2 lb. 25[¢]**
Fre-Mar Pineapple Chunks 20 can. 29[¢] **Fre-Mar Peas & Carrots 16 oz. 19[¢]** **Phillips Tomato Soup 32 OFF pkg. 29[¢]**
Fre-Mar Whole Peeled Apricots 29 oz. 35[¢] **Fre-Mar Golden Succotash Cream Style 16 oz. 19[¢]** **Bakers Cookies Choc. Chip or Choc. Fudge 1 lb. 43[¢]**
Fre-Mar Royal Anne Cherries 2 16 oz. 27[¢] **Fre-Mar Small Lima Beans Green 15 1/2 oz. 21[¢]** **Star-Kist Tuna Chunk Style Light Meat 17 1/2 lb. 59[¢]**
Fre-Mar Fancy Applesauce 2 16 oz. 35[¢] **Fre-Mar Green Beans Mild or Hot 15 1/2 oz. 21[¢]** **Spam Ideal For Snacks 12 can. 43[¢]**
Fre-Mar Orange Grapefruit Sections 2 16 oz. 47[¢] **Fre-Mar Sockeye Salmon Sound 4 oz. 59[¢]** **Marshmallow Fluff 2 16 oz. 25[¢]**
Fre-Mar Grapefruit Sections 2 16 oz. 35[¢] **Fre-Mar French Dressing Mild or Hot 16 oz. 17[¢]** **Babo Cleanser 2 14 oz. 27[¢]**
Fre-Mar Purple Plums 29 oz. 25[¢] **Fre-Mar Pure Mayonnaise 35 1/2 oz. 59[¢]** **Glim Liquid Detergent 100 OFF SALE can. 55[¢]**
Fre-Mar Cut Green Beans Fancy 2 16 oz. 23[¢] **Fre-Mar Salad Dressing 31 1/2 oz. 49[¢]** **Reynolds Wrap 25 ft. roll 27[¢]**
Fre-Mar Cut Wax Beans 2 16 oz. 25[¢] **Fre-Mar Stuffed Olives 31 1/2 oz. 39[¢]** **Reynolds Heavy Duty Wrap 25 ft. roll 55[¢]**
Fre-Mar Cut Asparagus Spears 2 16 oz. 35[¢] **Fre-Mar White Meat Tuna Fancy 7 oz. 33[¢]** **No-Cal Beverages Assorted Flavors 2 16 oz. 29[¢]**
Fre-Mar Sliced Pineapples 2 16 oz. 31[¢] **Fre-Mar Bartlett Pears 27 can. 39[¢]** **NBC Waverly Wafers 13 oz. 31[¢]**
Fre-Mar Cut Wax Beans 2 16 oz. 35[¢] **Keekler's Club Crackers 12 pkg. 47[¢]**

In Our Dairy Dept. ... Foods MEANT for LENT

Fresh From Nearby Farms

Food Fair Eggs LARGE WHITE GRADE A doz. 51[¢]

Mayfair Eggs LARGE MIXED doz. 49[¢]

MARGARINE FINE-SPRED 2 1-lb. 43[¢]

KRAFT ASSORTED Party Snacks 4 oz. 37[¢]

BORDEN'S BALLARD or PILLSBURY Biscuits Oven-Ready 2 1/2 lb. 27[¢]

WISCONSIN (By The Piece) Muenster Cheese lb. 49[¢]

Fresh Frozen Food Savings

GOLDEN IMPERIAL — Fresh Frozen Fantail Shrimp Breaded 10 oz. 49[¢]

TASTE O'SEA — Fresh Frozen Flounder Fillets 1-lb. 49[¢]

FF DELUXE—Fresh Frozen French Fries 2 1/2 lb. 29[¢] **TASTE O'SEA—Fresh Frozen French Fried Scallops 1 lb. 49[¢]**

JOLES—Fresh Frozen Pineapple Chunks 2 1/2 lb. 49[¢] **MILADY'S—Fresh Frozen Corn Fritters 7 oz. 29[¢]**

MRS. PAUL'S—Fresh Frozen Codfish Cakes 2 1/2 lb. 35[¢] **MORTON'S—Fresh Frozen Macaroni & Cheese 2 1/2 lb. 45[¢]**

Thousands of FREE GIFTS with MERCHANTS GREEN STAMPS

WE ADVISE THE BUYER TO LIMIT QUANTITIES — NONE PAID TO MAIL

ORDINARY PRICE EFFECTIVE MAR. 14 thru MAR. 28. ALL OTHERS MAR. 14, 15 & 16 ONLY.

You Can Put Your Trust In "Super-Right" Quality Meats!

"SUPER-RIGHT" QUALITY

SMOKED HAM



Shank Portion	Butt Portion	Whole or Either Half—Full Cut
29^c lb.	39^c lb.	49^c lb.

"Super-Right" Quality
READY-TO-EAT HAMS

Shank Portion 33^c lb.	Butt Portion 43^c lb.	Whole or Either Half—Full Cut 53^c lb.
--	---	--

ROUND ROAST or STEAK
"Super-Right" Quality Beef—Boneless—(No Fat Added)
Top Round, Bottom Round, Top Sirloin... your choice of all these cuts at one low price at A&P!
lb. 65^c

"Super-Right" Quality Ground Beef 33 ^c 3 ^{pk.} 98 ^c	"Super-Right"—BONELESS BRISKET Corned Beef 49 ^c 59 ^c	Front Cut Fowl 39 ^c
Swift's Premium Sausage Brown "H" Serve 49 ^c	"Super-Right" Quality—All Sizes READY-TO-COOK For Fricassee, Stewing or Soups	Straight Cut

Dairy Values!

Mel-O-Bit Process Cheese	8 oz. pkg.	27^c
American Slices	8 oz. pkg.	29^c
Domestic, Fancy Quality		
Romano Cheese	8 oz. pkg.	89^c
Imported Cheese		
Danish Blue	8 oz. pkg.	83^c
Swiss Knight—Imported		
Gruyere Cheese	8 oz. pkg.	39^c
Borden's or Philadelphia Brand		
Cream Cheese	8 oz. pkg.	35^c
Borden's—Plain or Country Style		
Cottage Cheese	16 oz. can	29^c
Colonna Imported Italian Parmesan		
Grated Cheese	4 oz. jar	35^c

A&P's Premium Quality Coffee

Eight O'Clock Mild and Mellow	1 lb. bag	87^c
Red Circle Rich and Full-Bodied	1 lb. bag	91^c
Bokar Vigorous and Winy	1 lb. bag	95^c
A&P VACUUM PACKED Coffee Fine or Big	1 lb. can	99^c

Don't Miss These!

WISE Potato Chips	4 oz. pkg.	25^c
Keebler TOWN HOUSE Crackers	8 oz. pkg.	23^c
Diamond Brand Walnuts In-shell	1 lb. pkg.	53^c
Burky's Shortbread Fudge-filled	10 oz. pkg.	49^c
Broadcast Pig Feet	8 oz. jar	27^c
Floriant Aerosol Deodorant	8 1/2 oz. can	79^c
Kirkman's Cleanser For bathroom and kitchen	14 oz. can	10^c
Marcal Paper Napkins White	2 pkgs. of 80	23^c
Oetagon Laundry Soap	3 cakes	29^c
Clorox Cleans, deodorizes, disinfects	1 quart bottle	18^c
	1/2 gal. bottle	32^c

Coca-Cola Buy 2 family size at regular price, get 1 free! Plus 4 family size deposit 37^c	No-Cal Beverages All varieties No deposit 2 bottles 29^c
---	--

Breast-O-Chicken Tuna Fish Light meat Solid pack 7 oz. can 35^c	Salada Tea pkg. of 16 Tea Bags 24^c pkg. of 48 Tea Bags 63^c
--	---

Sweetheart Soap Buy 2 cakes at regular price get 1 at 1/2 price 3 reg. 22^c 3 bath cakes 31^c	Lux Flakes For fine fabrics large pkg. 33^c giant pkg. 79^c
---	--

LIBBY'S BRAND Fruit Cocktail 2 8 1/2 oz. cans 25^c	2 17 oz. cans 41^c
CAMPBELL'S BRAND Tomato Juice 2 17 1/2 oz. cans 25^c	2 46 oz. cans 57^c
A&P BRAND — OUR FINEST QUALITY	
Sauerkraut 2 16 oz. cans 19^c	2 27 oz. cans 25^c
SUNNYBROOK BRAND	
Red Salmon 7 1/2 oz. can 49^c	16 oz. can 75^c
CAROLINA BRAND — FANCY LONG GRAIN	
White Rice 2 lb. pkg. 32^c	3 lb. pkg. 47^c

Kraft's Salad Dressing Miracle Whip 16 oz. jar 31^c 32 oz. jar 53^c	Mahisco Cookies OREG or SWISS CREME SANDWICH 16 oz. pkg. 33^c
12-In-1 Mix Bisquick 20 oz. pkg. 23^c 40 oz. pkg. 39^c	A&P Brand—Jumbo—in Shell Roasted Peanuts 16 oz. cello pkg. 35^c
Ready-To-Serve Unsalted A&P Pecans 16 oz. cello pkg. 39^c	
Sunsweet Prunes 2 16 oz. glass jars 43^c	

For extra savings... serve Jane Parker Baked Goods!

Danish Pecan Ring Vanilla Iced	43^c
Gold Layer Cake Chocolate Fudge Iced	65^c
Hot Cross Buns pkg. 8 for	33^c
Pineapple Pie A Wonderful Dessert	each 43^c

Garden-Fresh Fruits and Vegetables!

ORANGES Florida New Crop—Valencia	5 lb. bag 39^c
PASCAL CELERY From Florida Farms	mod. stalk 19^c

Lettuce Iceberg From Western Farms	2 large heads 25^c	New Cabbage From Florida Farms	lb. 8^c
Bananas Golden Ripe—Yellow	2 lb. 25^c	Potatoes Maine U.S. No. 1—Grade 'A' Size	10 lb. bag 35^c
Grapefruit Florida Seedless, White	5 lb. 39^c	Pineapple Fresh Extra Large Size	ea. 29^c

Heinz Soups Cream of Pea, Vegetable, Vegetarian	2 cans 27^c	Mazola Oil For cooking and salads	pt. 37^c quart 67^c
Palmolive Soap For toilet and bath	3 reg. 26^c	Palmolive Soap Especially for the bath	2 bath cakes 25^c

Silver Dust Blue Detergent	large pkg. 33^c giant pkg. 79^c	Surf 6 cents off label 11 cents off label	1 lb. 26^c 11 lb. 66^c
Rinso White soap granules	large pkg. 32^c giant size 77^c	Vol Liquid Detergent	22 oz. can 65^c



A&P
Come See... You'll Save at A&P!

Frozen Foods!

Cap'n John's—Concentrated		
Oyster Stew 2 10 oz. cans 53^c		
Cap'n John's		
Shrimp Breaded 10 oz. pkg. 59^c		
Birds Eye—Regular or French Style		
Green Beans 2 9 oz. pkgs. 41^c		
Birds Eye—Fordhook		
Lima Beans 2 10 oz. pkgs. 51^c		
Birds Eye		
Broccoli Chopped 10 oz. pkg. 19^c		
Birds Eye		
Wax Beans Concentrated 9 oz. pkg. 21^c		
Dole's PINEAPPLE and GRAPEFRUIT JUICE 2 8 oz. cans 33^c		
Libby's Brand		
Orange Juice 3 8 oz. cans 50^c		

Lenten Favorites!

Bumble Bee Tuna Fish White Meat	7 oz. can 39^c
Tuna Fish Flakes	6 oz. can 20^c
Morgan's Glim Chowder FROZEN	12 oz. can 35^c
Beardsley's Cod Fish Cakes FROZEN	8 oz. pkg. 39^c
Mennen's Spanish Rice	15 oz. can 19^c
River Brand Brown Rice	12 oz. can 15^c
Minute Rice Pre-cooked 2 5 oz. pkgs. 29^c	
Pancake Flour Pillsbury or Aunt Jemima	15 oz. pkg. 19^c
Ann Page Syrup Cane & Maple 12 oz. jar 27^c	24 oz. jar 47^c
Elbow Macaroni Ann Page	2 lbs. 33^c

★Houseware Values!

Refrigerator Containers	pkg. of 6	2.00 99^c
Plastic Plane Kit	4 model aeroplanes	1.49 89^c
Veri-Sharp Blades	Package of 50	2.75 79^c
Paper Dispenser	Double edge 3-way for towels, wax paper and foil wrap	3.95 2.59
Magazine Rack	Black Iron	1.59 1.59
Bath & Utility Stool		2.98 2.98

★Available in most A&P Super Markets

College Inn Tomato Juice Cocktail 26 oz. bottle 29^c	Gerber Baby Food Strained Chopped 10 oz. 99^c 6 oz. 89^c
--	--

Cashmere Bouquet Soap 3 reg. 26^c	Cashmere Bouquet Soap 2 bath cakes 25^c
---	---

A&P Super Markets
THE GREAT ATLANTIC & PACIFIC COAST COMPANY
Prices effective thru Sat., March 16th in Super Markets and Self-Service stores.